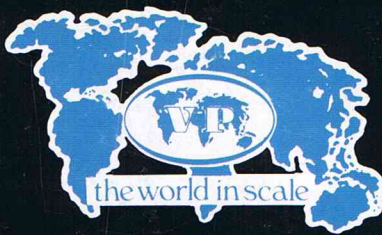


# VERLINDEN PRODUCTIONS

Modeling

Magazine



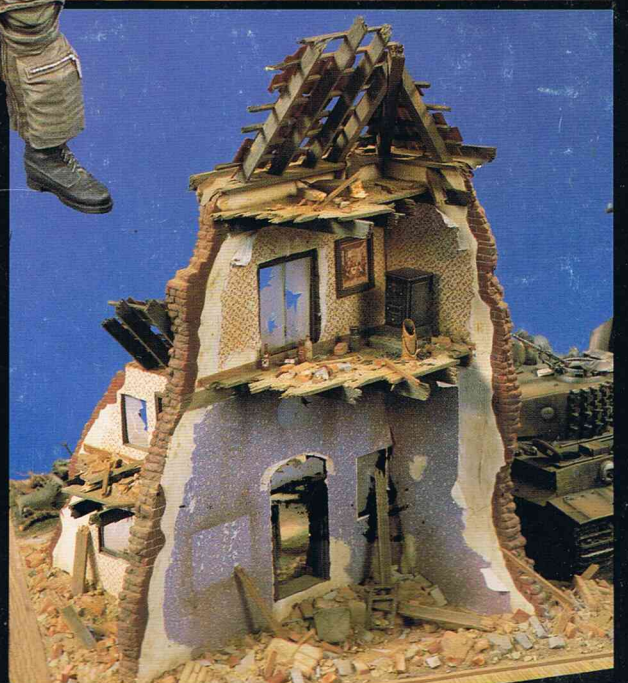
**special**  
3 pages of  
modelers in focus

In this issue

Focus on: British Paratrooper WWII  
USS NIMITZ, a view below deck on 1/72  
"Operation Market Garden"  
a 1/35 diorama



Expected:  
120mm  
"TOP GUN" pilot



The M163 VULCAN, a survey

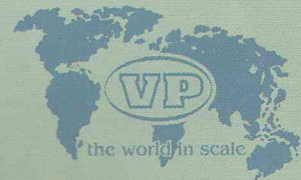
Tools & Techniques:  
Constructing a house ruin

# The perfect combination



**WARMACHINES N°4**  
MILITARY PHOTO FILE  
ISRAELI M4 SHERMAN  
AND DERIVATIVES

555



## For modelers who love authenticity

(find these items in your VP catalog)

**VERLINDEN PRODUCTIONS VERLINDEN PUBLICATIONS**  
Ondernemersstraat 4, KMO-Zone Mallekot,  
B-2500 LIER/BELGIUM



**LOCK ON N°8**

AIRCRAFT PHOTO FILE

McDonnell Douglas

**F-4E PHANTOM III**

François Verlinden & Willy Peeters

VERLINDEN PUBLICATIONS



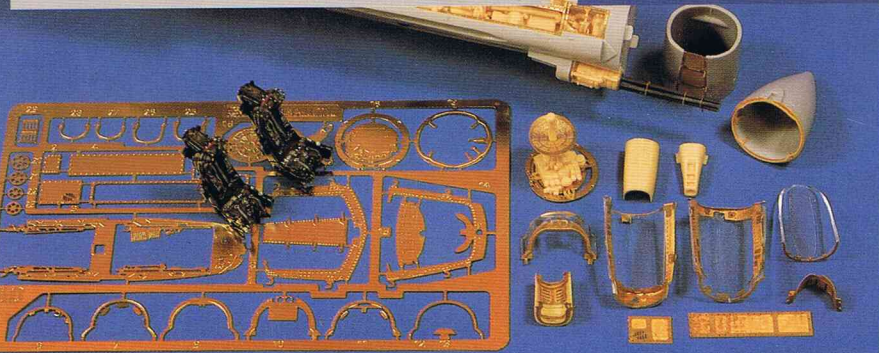
**LOCK ON N°10**

AIRCRAFT PHOTO FILE

Willy Peeters

**BRITISH PHANTOM F-4J/FCR1 & FCR2**

554





**VERLINDEN PRODUCTIONS  
VERLINDEN PUBLICATIONS**

Modeling books & accessories

Volume 2 Number 2

**EDITORIAL**

Chief Editor: François VERLINDEN

Editor: Willy PEETERS

Associate Editor in the USA

Bob LETTERMAN

**ART**

Art Director: Willy PEETERS

**SALES**

Advertising, Sales & Marketing

Wim VERLINDEN

Judith DE BIE



François VERLINDEN

Willy PEETERS

Jef VERSWIJVEL

Roger STRAUS



Bob LETTERMAN

Wes BRADLEY

Paul HANSON

Bill LETTERMAN SR.

Herb RIGG

**EDITORIAL OFFICE**

Ondernemersstraat 4,

KMO-Zone Mallekot

B-2500 LIER / BELGIUM

\*\*\*

VERLINDEN PRODUCTIONS Modeling Magazine is a quarterly publication by VERLINDEN PUBLICATIONS, a division of VERLINDEN & STOK nv.

Ondernemersstraat 4, KMO-Zone Mallekot, B-2500 LIER, BELGIUM.  
Phone (03) 480 65 26 Fax (03) 489 29 26

The contents of this publication, including all articles, designs, plans, drawings and photographs are all copyright VERLINDEN PUBLICATIONS unless otherwise indicated. This publication may therefore not be reproduced in part or in whole without the written consent of the publisher, except in the case of brief quotations in reviews. The Publisher cannot be held responsible for unsolicited material which, if not accepted, will be returned only if postage and wrappings are provided. Photographs and articles accepted are paid for upon publication. If, for some reason, this publication is discontinued, no refunds will be paid by the Publisher to subscription holders nor can the Publisher be held responsible for any damage resulting from the discontinuation of this magazine.

VERLINDEN PRODUCTIONS Modeling Magazine is printed in Belgium by Drukkerij DE PEUTER nv, Herentals. Color repro by SCANBO, Beerzel, Belgium.

## From the editor

Recently, I have been noticing some interesting developments in the model industry. VLS conducted a survey of the Masters Group, a special club with about a thousand members, with some surprising results.

They indicated they were unhappy with the number of VP releases, that they wanted more. Now, however you feel about our products, you must admit that we release more new products than any company in the industry, large or small, and by a significant margin.

While at the RCHTA model show in Chicago, I met with the plastic kit manufacturers and the general feeling was that most intended to cut back on new releases due to increased costs of molds and their inability to sell sufficient quantities of kits at an acceptable price to amortize these costs.

Currently, there are persistent rumors that a few of these major manufacturers are in financial difficulties. You may ask how this is possible considering the price of kits these days. Many modelers have no idea of the enormous cost of producing a mold. The plastic is relatively inexpensive but you are paying for the development, production, packaging, advertising, warehousing and distribution costs.

Combine these two elements and the result is a proliferation of "Cottage" companies. We began as a cottage company and welcome the competition as businessmen and as modelers welcome products that help fill the gap. Unfortunately there are those who, in the best case, have no business ability, and in the worst case, have no ethics.

Some produce reasonable quality products that they sell only by direct mail order, being unavailable in Hobby shops. You may say that is a good idea, to bypass the importer/distributors and hobby shops as it will result in lower prices for you. The problem is twofold, first, it's quite common that they price these items near the prices of those using the middlemen which results in a very nice profit. More importantly, when you disregard the system, the consumer suffers in the end. Mail order companies definitely have a value, ask those modelers who have no nearby shops. However, imagine what modeling would be like if there were no shops, that you had to buy all your supplies by mail and, although unlikely, that could happen if a sufficient number of modelers stopped supporting their local shops.

The conclusion is simple, any addition to quality products is wholeheartedly welcomed as long as they use ethics in delivering those QUALITY products to the consumer and use the system, manufacturer-distributor-hobby shop-consumer to market those products.

Support your local hobby shop!

François Verlinden  
Chief Editor



### Correction

Due to an oversight while preparing the article on the Humvee in Volume 2 Number 1, nine of the fourteen photographs were inadvertently credited to Patrick J. Cooney while they should have been credited to Thomas J. FENSKE of Mishawaka, Indiana.

**Subscribe** to the VERLINDEN PRODUCTIONS Modeling Magazine now and you receive 1 year (4 full color issues) of VP Magazine for

#### Worldwide

Europe 1000,- Belgian Francs  
Outside Europe/Airmail 1200,- Belgian Francs

I make my payment by International Postal Money Order (Belgian Francs only)  
(only the above method of payment is accepted)

I want to start my subscription with

Volume  Number

Name \_\_\_\_\_

Street and n° \_\_\_\_\_

City and postal code \_\_\_\_\_

Country \_\_\_\_\_

#### VERLINDEN PRODUCTIONS

Ondernemerstraat 4,  
KMO-Zone Mallekot  
B2500 Lier/Belgium

#### For North and South America

U.S. - 3rd Class - \$ 19,95 U.S. / 1st Class - \$ 26,95  
Canada/Mexico Air - \$ 29,95 / Surface - \$ 26,95  
Foreign Air - \$ 39,95 / Surface - \$ 29,95

Subscription begins with current issue.  
Back issues available direct by mail order (not by subscription).

Name \_\_\_\_\_

Address \_\_\_\_\_

City, State, Zip \_\_\_\_\_

Country \_\_\_\_\_

Write or if paying by credit card call (314) 567-6266 M-F 8AM to 5PM C.S.T. for your subscription.

Checks must be U.S. funds drawn on U.S. banks

Credit Card Information \_\_\_\_\_

Cardholder Name \_\_\_\_\_

Signature \_\_\_\_\_

Card Number \_\_\_\_\_

Expiration Date \_\_\_\_\_

#### VLS

West Port Industrial Park  
804 Fee Fee Road  
Maryland Heights, MO 63043 U.S.A.  
(314) 567 - 6266

# Operation "Market Garden"



## A British rendezvous in the streets of Arnhem, Holland September 1944

One of the least successful battles of WWII (from the allied viewpoint) was "Operation Market Garden". Although the goal of the operation was commendable and the setup was very promising, the outcome was not what the generals had expected.

Operation Market Garden was a twofold undertaking. The airborne part, called Market, involved the US 82nd and 101st Airborne Divisions and the British 1st Airborne Division who would take all key bridges along the invasion road which would be used by Montgomery's 2nd Army to push through the Siegfried Line stronghold and into Germany (a ground operation called Garden).

On 10 September, only six days before the actual invasion, MGen R.E. Urquhart

(1st Airborne) was given orders to plan the invasion.

Intelligence reports, which turned out to be wrong, indicated little or no German resistance. On top of that, some British officer carried the complete plans of the operation with him, while his glider was shot down. The information carried allowed the Germans to take evasive action under the command of Generaloberst Kurt Student, who was an expert in airborne tactics.

Underestimating the German strength in the region, the slow speed of XXX Corps moving along the roads (due to heavy resistance) and airborne drops too far from the objectives were some of the mistakes leading to the lost battle. Few people could foresee the prophecy of

LtGen Browning's words when he was claiming "This time we may be going a bridge too far".

### THE DIORAMA

Every diorama starts with a basic idea which can be worked out as planned or changed while the actual build-up of the diorama progresses. The part on which we concentrated in this diorama was the Trophy "Townhall" (N°20018), but planning was always done with the two vehicles in mind. The choice of these vehicles is dependent on the kind of story you want to tell.

Here we portrayed a British Sherman III which crew is busy reloading ammunition and a British CMP supply truck.

Now, one of the major mistakes you

could make is to try and compensate the size of the building by adding too many vehicles. Instead, it is better to change the size of the vehicles in relation to the building.

Imagine a little Bren Carrier in front of the ruin instead of the CMP, which would make the building look much larger, and you have a totally different diorama.

Because almost the entire city of Arnhem (located in the southeast of the country close to the German border) was paved with cobblestones at the time of this reconstruction, it was obvious this would form the base of our diorama.

Trophy Models recently released vacuum formed cobblestone road sections which definitely replaced the no longer available VP cobblestone sections.

One of the major advantages of this vacuum formed diorama accessory is that due to its thinness it can easily be cut and glued in place.

Painting also poses no problems, it's sufficient to add some paint (which simultaneously serves as a wash), wipe the excess paint with a cloth and add some pastels for highlights. Mind you, the pastels should be applied when the surface has dried.



**Fig.2 & 3** A multitude of accessories have been added on top of the Sherman. Note the realistic appearance of the tank markings and the protective spare track shoes on the sloped hull front which can be found inside VP box N° 565.



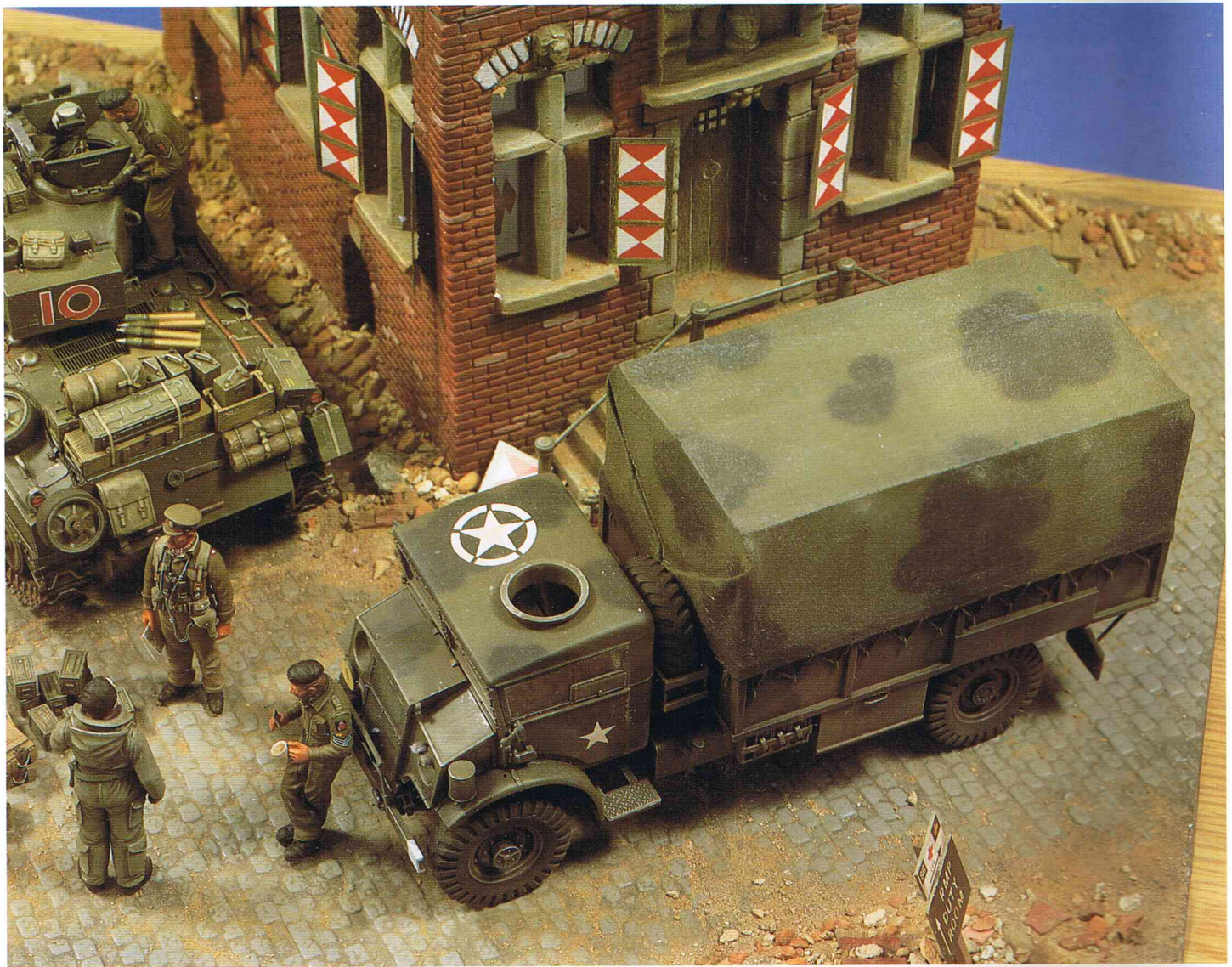


Fig. 4 The CMP ammunition supply truck in front of the townhall. An Italeri conversion which required some scratchbuilding but which was worth the effort. Note the road side at the bottom of the photo.

#### THE MODELS

One of the vehicles involved is a Sherman M4A2 with the VVSS suspension, which the British redesignated Sherman III. It features the early turret with the early M34 gun shield and a stowage box attached to the rear turret bustle.

We started with the basic Tamiya Sherman chassis with the T-62 tracks and the VVSS suspension. The resin casted M4A2 hull is from VP (N°333) and depicts the 56 degrees sloped hull front with the protruding drivers hatches. This resin hull fits nicely over the Tamiya chassis and only needs minor adjusting. The turret with the early split commanders hatch and the M34 gun shield is also from VP (N°334). The rear bustle stowage box can be found in VP set N°346 "Tank Tool & Equipment boxes" which also provided some of the ammo boxes on the tank. But more on this later. First, we would like to explain about the painting of this Sherman. Instead of the regular US Olive Drab color applied to US tanks, the British used Bronze Green to paint their M4's, which can be found in

the Humbrol range. Washing is still done with a mixture of Raw Umber, Yellow Ocre and Burnt Sienna. To respect the lighter shade of Bronze Green, use the Raw Umber economically. Highlight with the base color and some French Artillery Green and use pastels to complete the overall finish.

All stenciling was taken from VP dry transfer set N°347.

The detailed .50cal machinegun on the commander's hatch is from the VP Supertech kit N°372 (two .50's included). All 75mm ammo and ammo crates came from two sets VP N°94.

Accessories on the tank are from VP set N°70 Kitbags & Rucksacks, N°73 Jerrycans & Oil Cans, N°82 Tank Crew Gear and N° 565 Sherman Spare Tracks (to be released in March 1991 and including the steel T49 tracks).

A realistic tow cable was made from twisted copper wire to replace the one supplied in the kit.

The spare bogey wheels were taken from set VP N°204 Sherman Update kit.

The second vehicle on the scene is a

CMP supply truck. It is not available as such but was extensively scratchbuilt from the Italeri Chevrolet 15CWT (Kit N° 233).

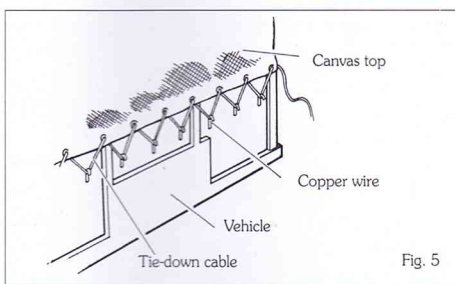
The only modification to the driver's cabin was the replacement of the square cabin hatch with a circular one which required some filling and sanding. However, the chassis was lengthened some 40mm (1.5") and the cargo upper structure made from Plastruct and plastic sheet measured 104 x 66mm (4x2.6").

Plastic sheet bulkheads were constructed inside the cargo bay to support the canvas top.

For this we took a simple handkerchief (yes, an old one), cut it to size, soaked it in a mixture of water and white glue (a method still effective) and draped it over the bulkheads. The canvas tie-down cable was added starting at the front of the vehicle running down the tie-down hooks (made from copper wire and tightly secured inside the cargo bay sides) and back to the hem of the canvas top through previously marked holes (see Fig.5).



**Fig. 7** Balsa wood was used to construct the ground floor and first floor. Pieces of Trophy's vacuformed "Roof Tiles" were cut to size, washed with dark brown oil paint and covered with matt varnish. No painting was needed because of the red color of the vacuformed plastic.

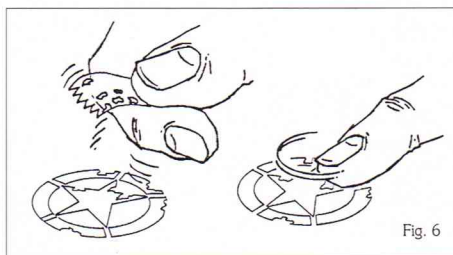


This was repeated on the opposite side and at the rear.

Unlike the Sherman with a single overall color, this CMP was painted Olive Drab with a "cloud" pattern of black, commonly referred to as "Mickey Mouse Ear". This may seem harsh at first but the washing and weathering procedure will tone down the black enough to blend with the rest of the color. Extensive use of pastels will reveal the texture of the canvas top.

Markings are again dry transfers from VP, which really look like being painted because of their matt appearance. They can easily be given a "chipped-off" look

by using a piece of Scotch Magic Tape (made less adhesive by applying it on your jeans a few times) applied to the part of the transfer to be eliminated and removing the tape with a sudden movement. The transfer will crack in a most natural way. Rub tight with your fingers afterwards (see Fig.6). Wash and weather the truck the same way as the Sherman.



If you are looking for typical British vehicle markings try VP transfer N°348 & 349. The first sheet contains various vehicle markings and numbers while the other has Division/Brigade markings as well as the most important pennants.

## THE FIGURES

It used to be hard to find the proper figures to decorate a British WWII diorama. Today, with three VP British figures, a British tank crew and some British heads WWII one can quite easily convert whatever figure is needed.

For instance, the figure leaning against the truck has upper body parts from the British Tank Crew officer WWII(N°311), a head from British Heads WWII and the legs of Mechanic N°1. The legs of Mechanic N°2 are used for the tank crewman standing next to the Sherman turret, with the same upper body parts of the previous figure. Leg parts of Mechanic N°3 were also used. They can be found on the squatting figure next to the tank, holding the ammo round.

The two remaining figures are stock VP figures (N°302 & N°363).

## THE BUILDING

The final part to be discussed is the huge Trophy model of a townhall, probably dating as far back as the late 1700's. Many of these stylish patrician houses can be found in the Low Lands. Most of these are classified monuments and can no longer be pulled down. Some are turned into museums while others are still used as homes.

The one represented here is typical for the location.

Fortunately, all window covers, window panes and doors are pre-printed and weathered which saves a lot of time. The handrail posts are included in the kit.

The roof tie-beams are made of the usual balsa wood and decorated with pieces of Trophy roof tile sections.

The building interior was kept simple, only ground level and first floor planking was simulated.

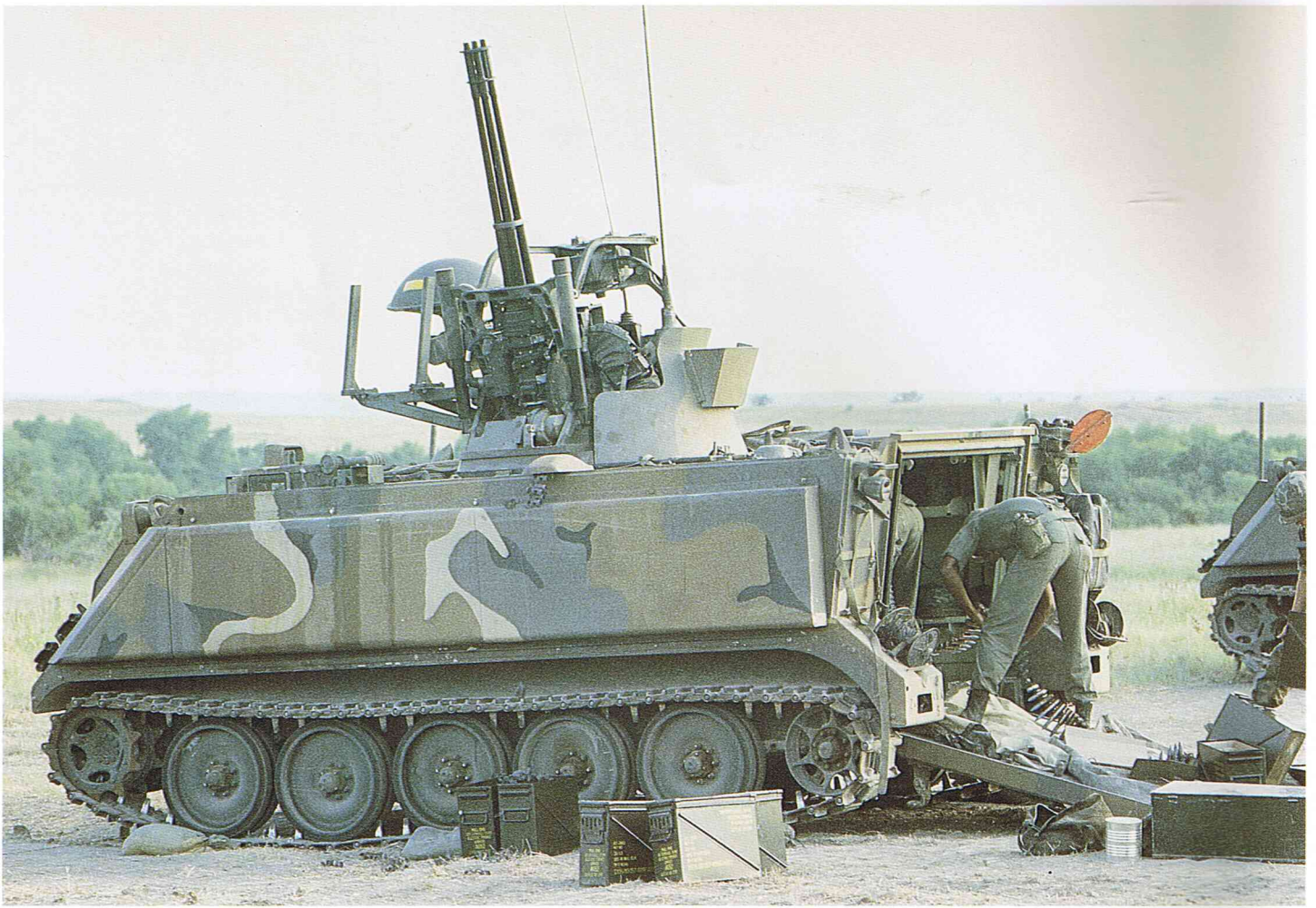
The building was painted Red Crimson except for the natural stone parts and a few bricks here and there. Washing with oil paints in various shades (darker at the bottom of the ruin and lighter on the upper parts) was done before the final weathering with pastels completed the painting stage.

To keep up credibility a ruin should be supplemented by lots of rubble and debris. Don't overdo it but be sure to make it look all right. A heavily damaged building with only a few bricks and dust next to it looks totally out of place.

The newly released Trophy Diorama Systems range may help you out because it features items such as concrete blocks, bricks in different colors, rubble, broken roof tiles, debris in different sizes, etc. .

To complete the diorama a few road signs were added from VP road sign set N°19 which features suitable signs for the region. These signs are very important. After all, these troops were on foreign soil and had to be directed towards their rendezvous point.

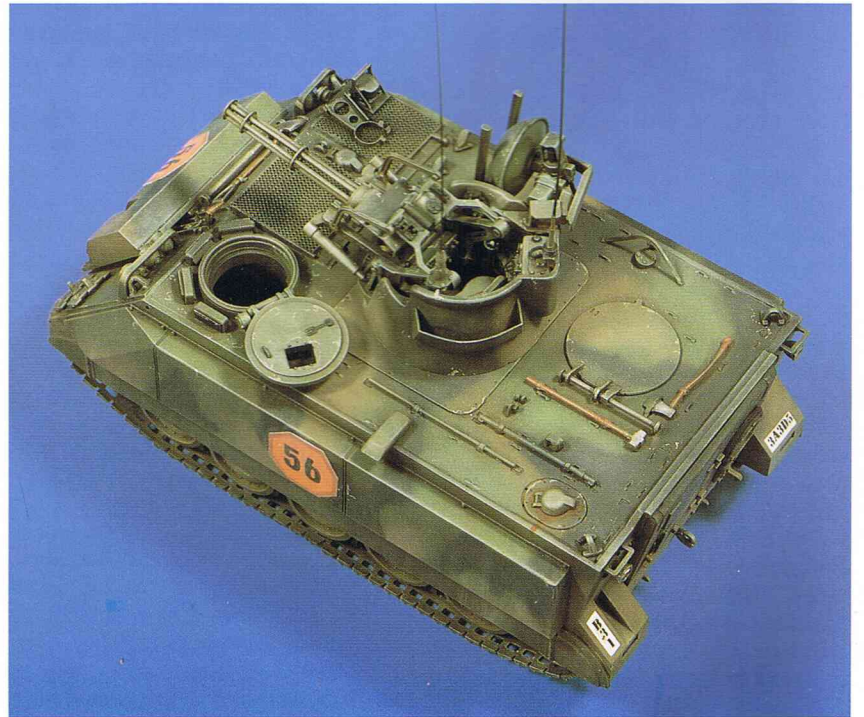
Be sure to use only related road signs in the scenery.



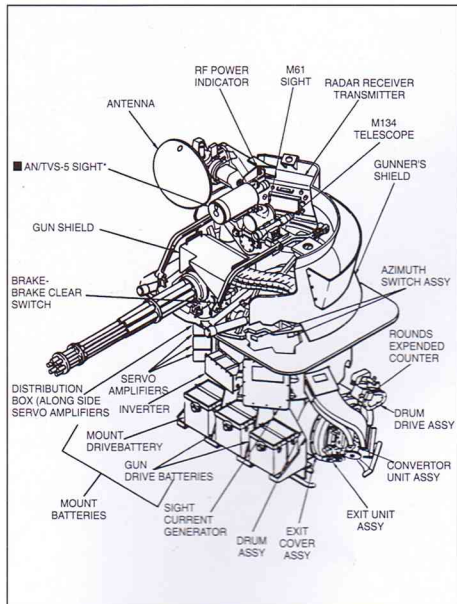
## M163 A1 VULCAN

AIR DEFENSE ARTILLERY SYSTEM

One of the most attractive M113 conversions,  
finally available in 1/35th scale







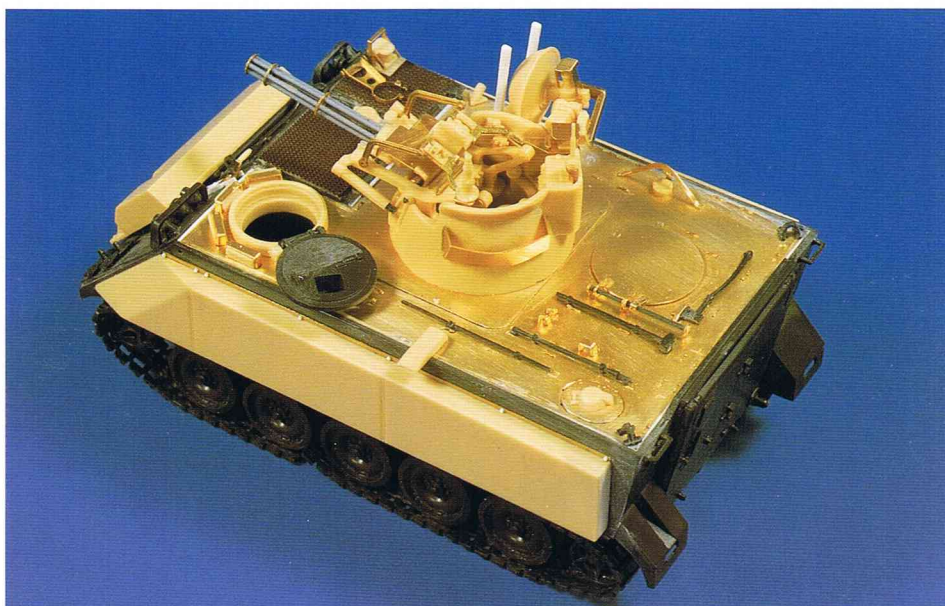
**Fig. 1** The major components of the M163 VULCAN gun turret assembly.

Years have past since the first M113 kit from Tamiya was released, enabling the modeler to fully exploit the versatility of this design.

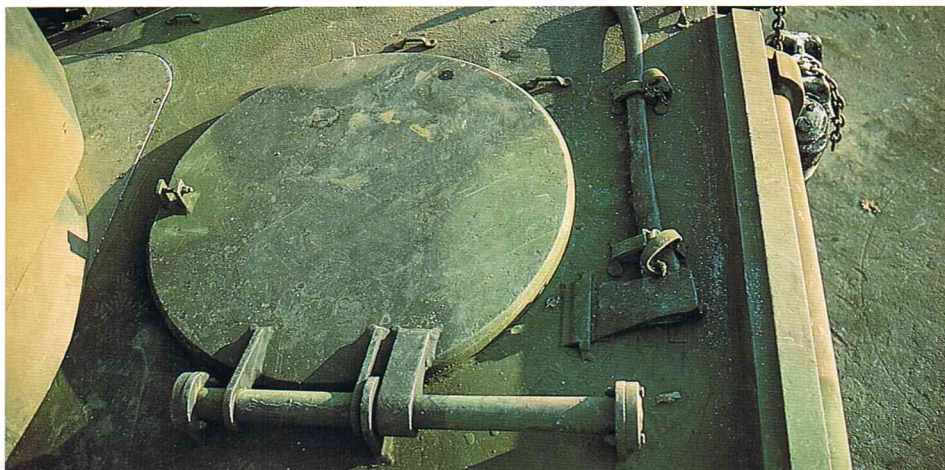
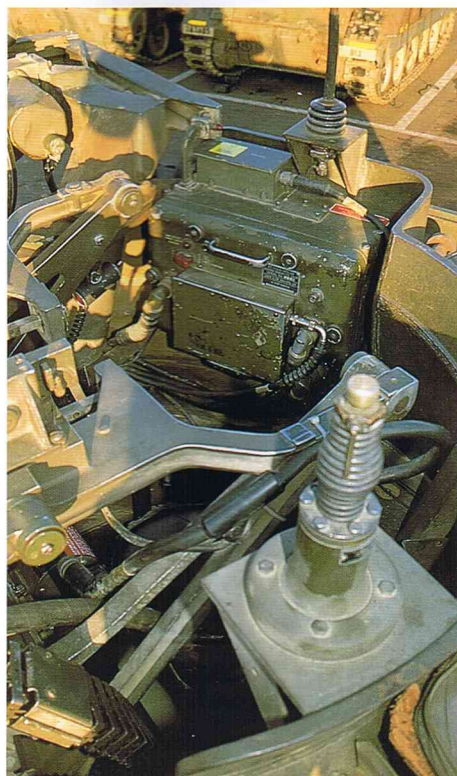
The M113A1 Fire Support Vehicle, M106A1 SP Mortar and the M577 Command Post Vehicle (of which the latter two have been covered in detail in WARMACHINES N° 2 published by Verlinden Publications) are about the only conversions Tamiya had offered us. Yet, one of the most attractive M113 derivatives was still missing on the hobby shelves. So, this VP conversion set will come in handy for those who ever attempted scratchbuilding the M163 Vulcan but, unfortunately, did not succeed because of the complexity of the design.



**Fig. 2** In order to take the gun turret, the upper deck layout had to be changed. Compare with the model below and construct yours accordingly.



**Fig. 3** The Tamiya kit with all resin and photo-etched parts of the VP kit in place. The model is ready to be spraypainted.



**Fig. 4** The large square escape hatch of the plain M113 was replaced by a circular hatch for the commander, located in the same spot on the rear upper deck.

**Fig. 5** The radar receiver/transmitter is mounted aft of the gunner's place. Note the two antenna mounts attached to the inside of the turret.

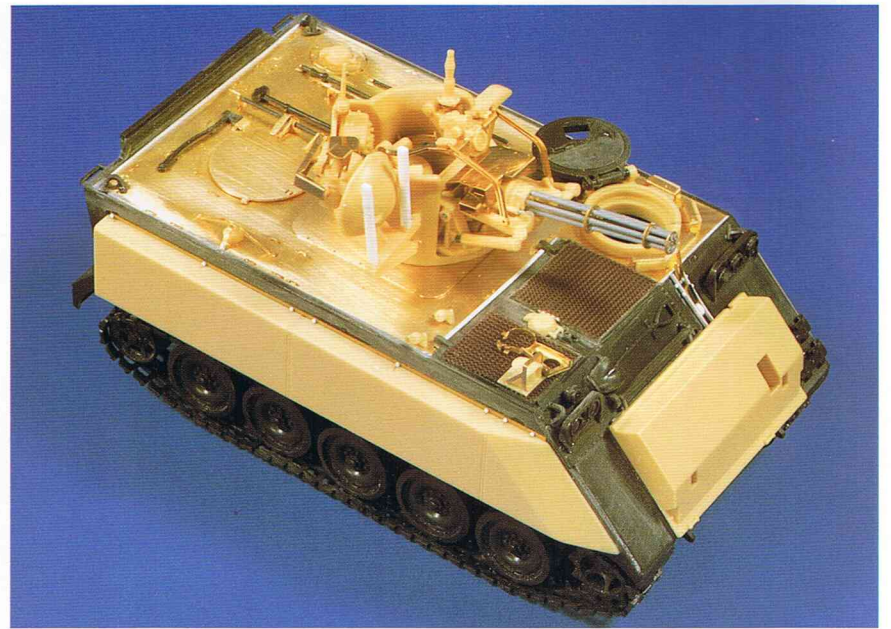
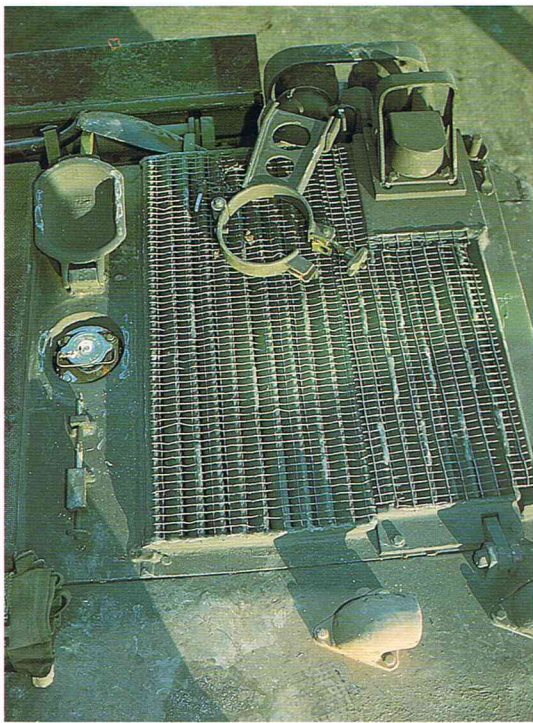


Fig. 6 The gun travel lock is located in front of the engine coolant exhaust on the right front side of the vehicle. Note the different filler cap between the exhaust grilles.

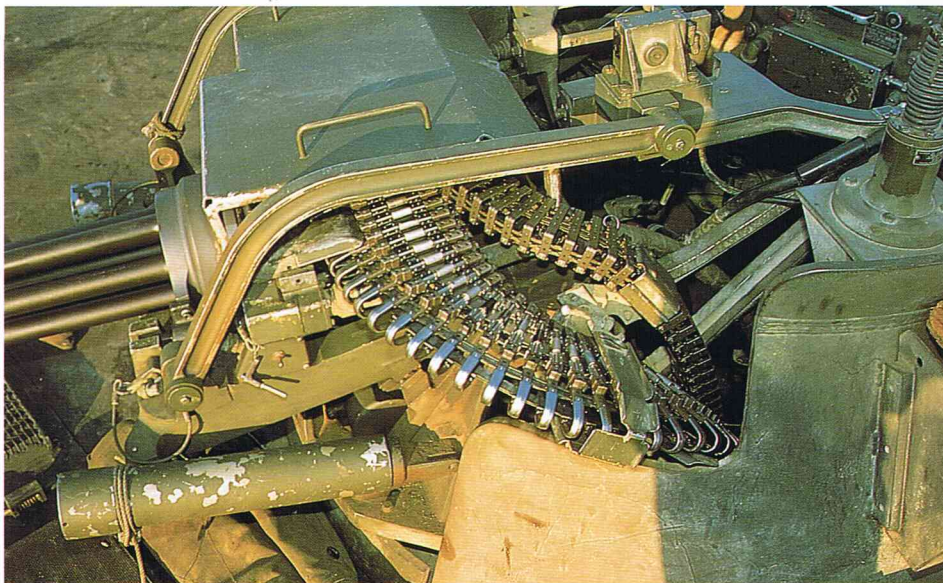


Fig. 8 A close look at the linkage assembly with the protective gun shield installed. The ammo feed installation can be seen emerging from inside the turret. The ammo feed line is on the bottom while the empty shells are transported back into the drum through the upper guide-rail.



This first in a two-fold article is intended to provide sufficient photographic material to complete your Tamiya/VP conversion with some tips on assembling. It is not an extensive coverage of the Vulcan with merely nine photos taken from the upcoming WARMACHINES on the M163 VULCAN, but it should enable you to complete your model.

As can be seen in Fig. 3 and Fig. 7, the Tamiya upper deck was scrapped and replaced with VP's photo-etched deck. Because the driver's hatch assembly is integrally molded with the upper deck, a separate resin hatch assembly is enclosed in the kit to fit the hole in the brass-etched upper deck. The hatch itself was taken from Tamiya. The large rectangular escape hatch on the rear deck was replaced by a large round hatch which can be found on the large brass-etched frame. This hatch is shown in detail in Fig. 4. Since the rear ramp door remained closed (the Vulcan interior is quite complicated as will be shown in the upcoming WARMACHINES), the large gun turret could be inserted without removing part of the bottom casting which will not show once the turret is installed. Minor adjustments and some sanding may be needed before the resin turret fits the brass-etched upper deck. To enhance authenticity, all tie-down fittings are separate pieces and must be glued to the marked locations on the upper deck. Be patient, the result is great.



Fig. 1 The assembled model, brickwork painted and weathered, stonework base-coated.

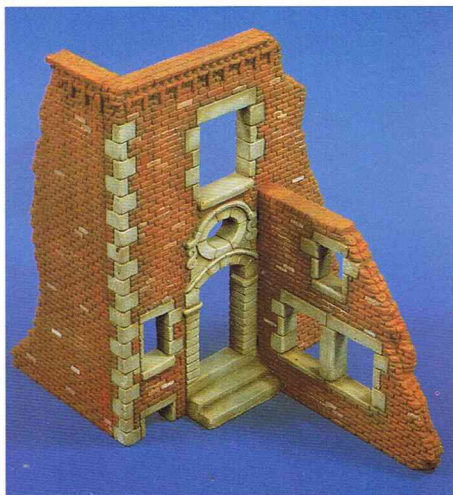


Fig. 2 The model completely painted and weathered.

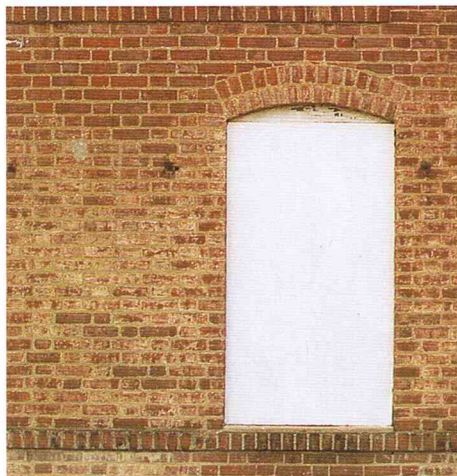


Fig. 3 Brick wall showing weathered by the elements.



Fig. 4 Plaster wall cracked and discolored after a while in the open.

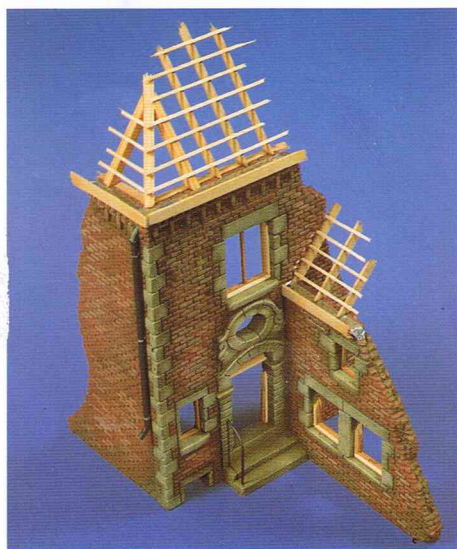


Fig. 5 Model with basswood framework installed.

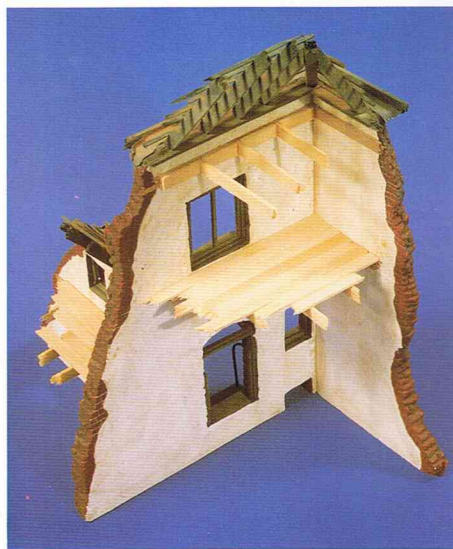


Fig. 6 View showing frame- and roof work painted, floor/ceiling unpainted.

## Tools and supplies needed.

- Different grades of sandpaper
- Hobby knife
- Scribing tool
- White glue, super glue (thick type)
- Pastel chalks
- Artists oils, (Burnt sienna and Raw umber)
- Paint brushes
- Plaster patching putty

Most castings are made from ceramic plaster, a material that is easily cut, sanded and lends itself to a wide variety of conversions and extra details.

## Construction

Begin by cleaning flashing with a hobby knife and then tape down a large piece of sandpaper to a hard flat surface with the textured side up, and then with a circular motion, sand the unfinished side of all parts until completely smooth and flat. Rescribe with a hobby knife and scribing tool any detail that is not clear or was lost in the sanding process. If you wish you may also add detail using the same process on the unfinished side of the casting.

Begin test fitting the parts to insure all parts will properly align before cementing as once the super glue has been applied, there is no way to realign. Hold the two parts together, then apply the glue from the top of the seam and it will flow from top to bottom by capillary action. Hold firmly until parts are securely bonded. Continue this step until kit is complete. Any seams that are visible can be easily filled with spackling paste or putty. (The kind used to patch plaster walls). Thin slightly with water and fill using a small brush (No. 3) and remove excess with a soft cloth. To complete the job a small brass wire brush used very lightly is very useful.

After completely dry, we are ready to begin painting. The following colors are recommended:

For Masonry walls base coat Humbrol matt tank gray 67.

For Plaster (Stucco) walls base coat matt 29 earth with a small amount of matt 33 black.

For Brick walls matt 60 red with a small amount of matt 33 black.

Some structures may have one or even all three of these material types, refer to the label if you have a problem determining color. After applying base coat, allow to dry for 24 hours before moving to the next step.

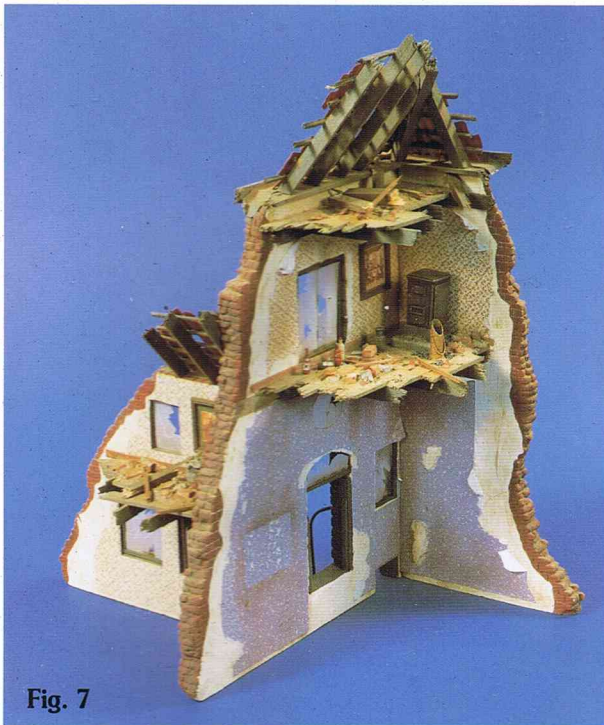


Fig. 7

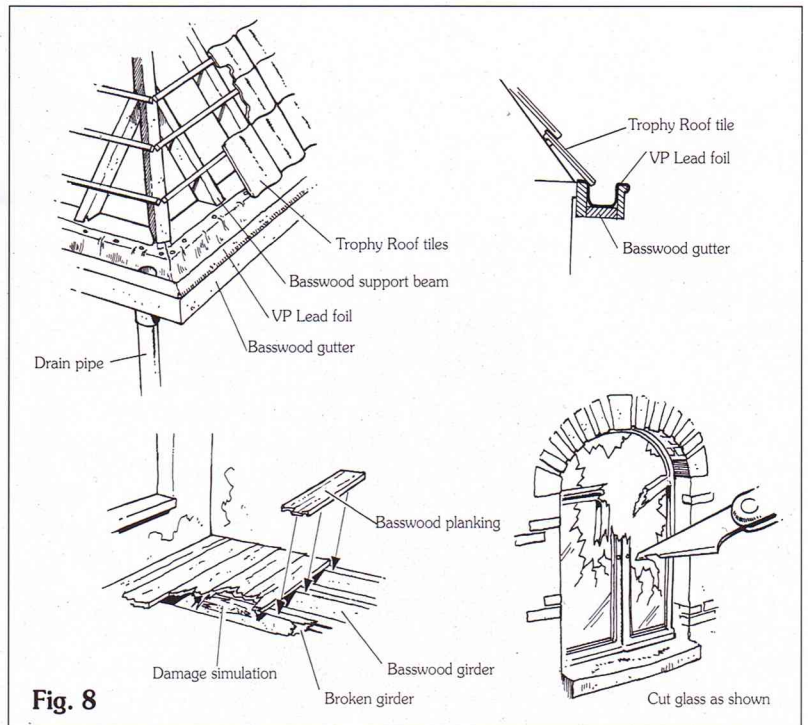


Fig. 8

### Weathering

Drybrush with a wide flat sable brush, expensive but important! Use the original basecoat color mixed with a small amount of white or khaki drill (Matt 72) depending on personal preference. With this method you must experiment until the shades and tones suit your taste.

You then add shadows with either pastel chalk, ground to a powder on sandpaper and applied with a brush in corners, recessed areas, etc., or a thinned mixture of raw umber artists oils and turpentine applied to the same areas and blended with a clean brush will work as well. Add rust and dirt streaks using the above method.

### Detailing

Depending on the building you are constructing and keeping in mind that in real life there are usually remains of floors/ceilings, roofs, window frames and windows, you will want to add these details to your model. A product readily available in most hobby shops that will be very useful is basswood. For our purposes it is superior to balsa as when painted or stained, it has a smooth scale texture. Beginning with the roof, plan the framework as indicated in figure 5 and construct using super glue (thick type). Then construct the floor(s) using basically the same technique, (see drawings and Fig. 6). For gutters, you may use basswood, plastic strip or for even greater realism, lead foil (see drawings). Don't forget to add drain pipes, which can be made from plastic tubing. Study photos of other models or real buildings for other details.

Paint the wood construction a dirty brown color, (Humbrol matt 60 and black), later highlight with light brown pastels. Normally, there are roof tiles still in place after a building has been damaged and you may want to simulate these with commercially available products such as the Trophy series. There are red clay tiles, and slate tiles in various sizes and patterns. These are easy to cut with a pair of scissors to any pattern you require. Paint the red clay a very dark red (matt 60 and some flat black), and dry brush with matt 60, using pastels to complete the weathering. Then apply to the basswood framework with superglue.

### Detailing the interior

Having previously sanded the interior walls smooth, you can paint them, or use VP 277, Wallpaper, for a different effect, this can be cut to the desired shape and applied with white glue, and while wet, tear at random for a more realistic effect (see Fig. 7).

Further decoration can be added by using products such as VP 307, framed paintings and carpets.

If you want to superdetail, there are unlimited possibilities, light switches, electrical conduit, gas lines, doors, door handles, remains of furniture, stoves, etc., the only limit is your imagination.

Your building is now ready to incorporate into a diorama scene which we will cover in part 2.

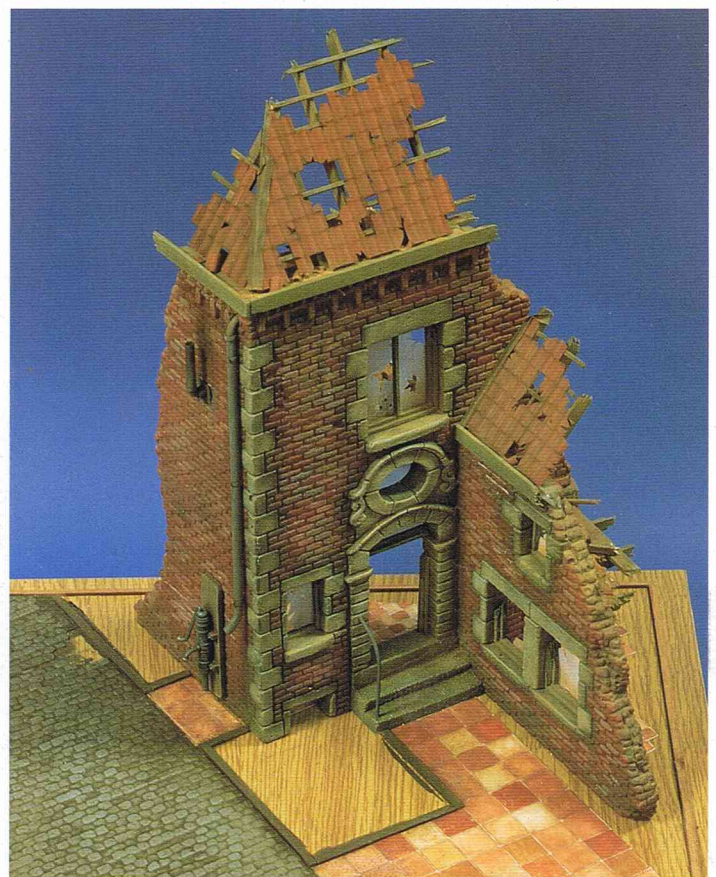


Fig. 9 Completely painted and weathered exterior ready to be installed in the diorama.

The outfit of the British paratrooper was tailored after the German Fallschirmjäger uniform but later evolved in the typical British jump smock with a camouflage pattern of tan, brown and green (superimposed).

Khaki trousers and black jumping boots with light khaki leggings were worn with the smock. Another useful piece of clothing was the camouflaged face veil which served many purposes.

MGen F.A.BROWNING of 1st Airborne was the driving force behind the authorization of the maroon-colored beret and the Bellerophon-on-Pegasus shoulder insignia as indicative signs for the paratrooper which was granted in August, 1942, when the Parachute troops officially became Parachute Regiment.

Like most soldiers, the trooper carried most of his equipment inside poaches on his web gear. A medium size rucksack was used for personal belongings. A combined spade/pick with shaft was also part of the basic outfit and was usually carried on the back below the rucksack as well as a light assault respirator.

Our model, Del Miller of the St Louis Military Reenactment Group, shows the proper way to carry the toggle rope. This was intended to perform the so-called "Death-ride" which meant the rope was used as a sling to slide down a cable from one elevation to another.

Some troopers preferred the small Mk4 9mm Sten machinegun as main armament while others carried the Mk4Lee Enfield rifle to defend themselves. Both weapons are shown on these pages. A "screwdriver bajonet" (a conical steel pick) was carried by the rifle-equipped trooper, usually below the left arm (see photos). The bandolier provided space for seven rifle or machinegun magazines.



## British Paratrooper WW II

A color reference guide for uniform and equipment



Fig.2 & 3 The .303 Lee Enfield Mk4 rifle in the foreground (and photo at left) and the small Mk4 9mm Sten submachinegun. Note the strap attachments.



Fig. 7 The camouflaged face veil was mainly used as a scarf. Note the wooden handhold on the toggle rope.



Fig. 8 The shoulder web with ammo/grenade pouches. Note the color of the belt buckles.

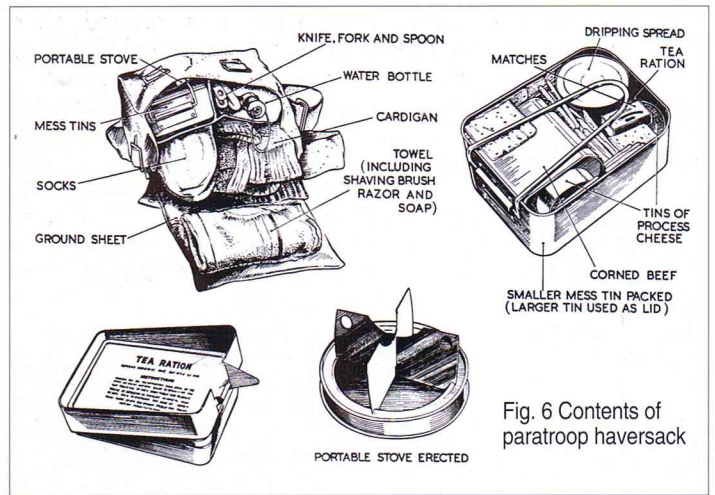
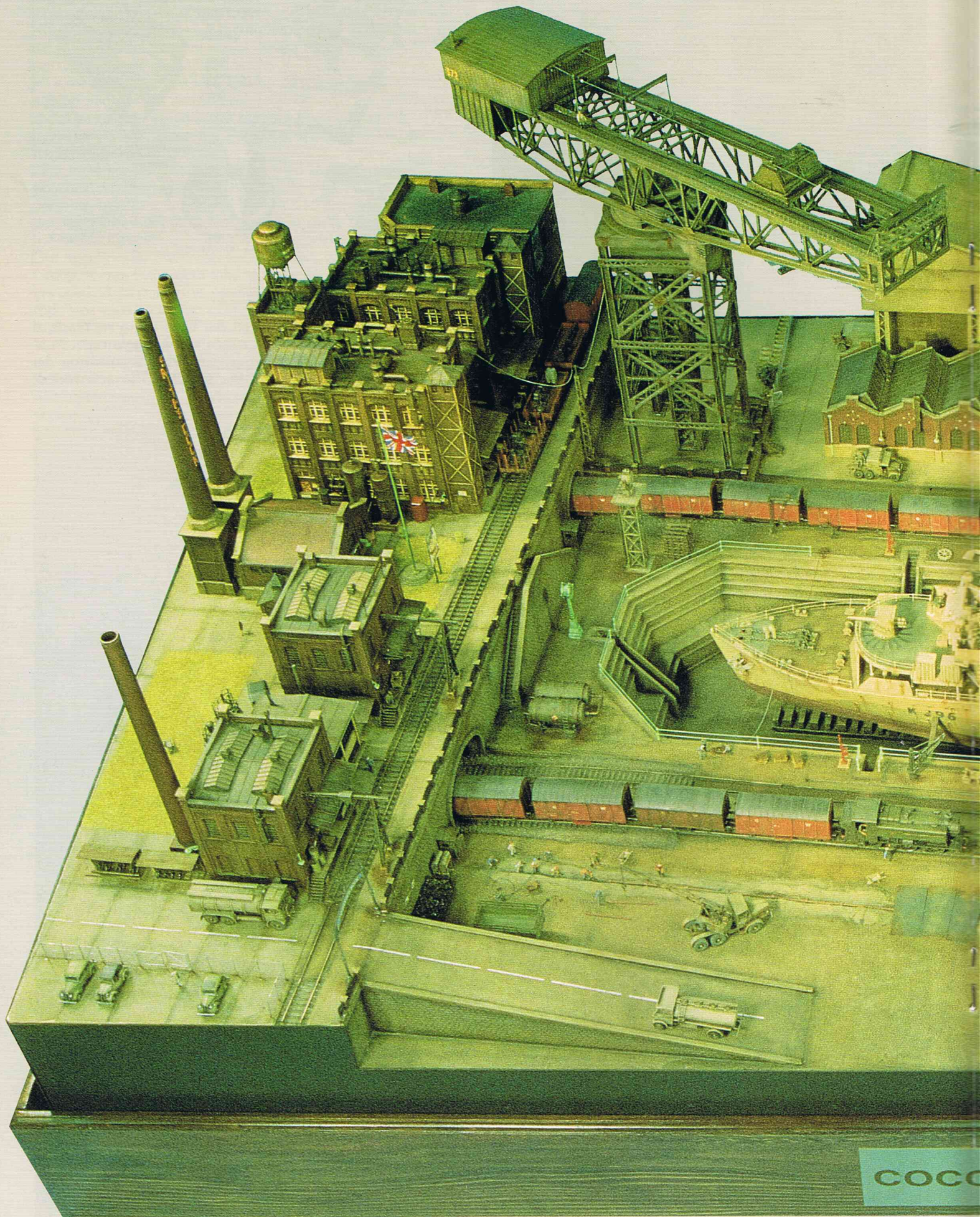


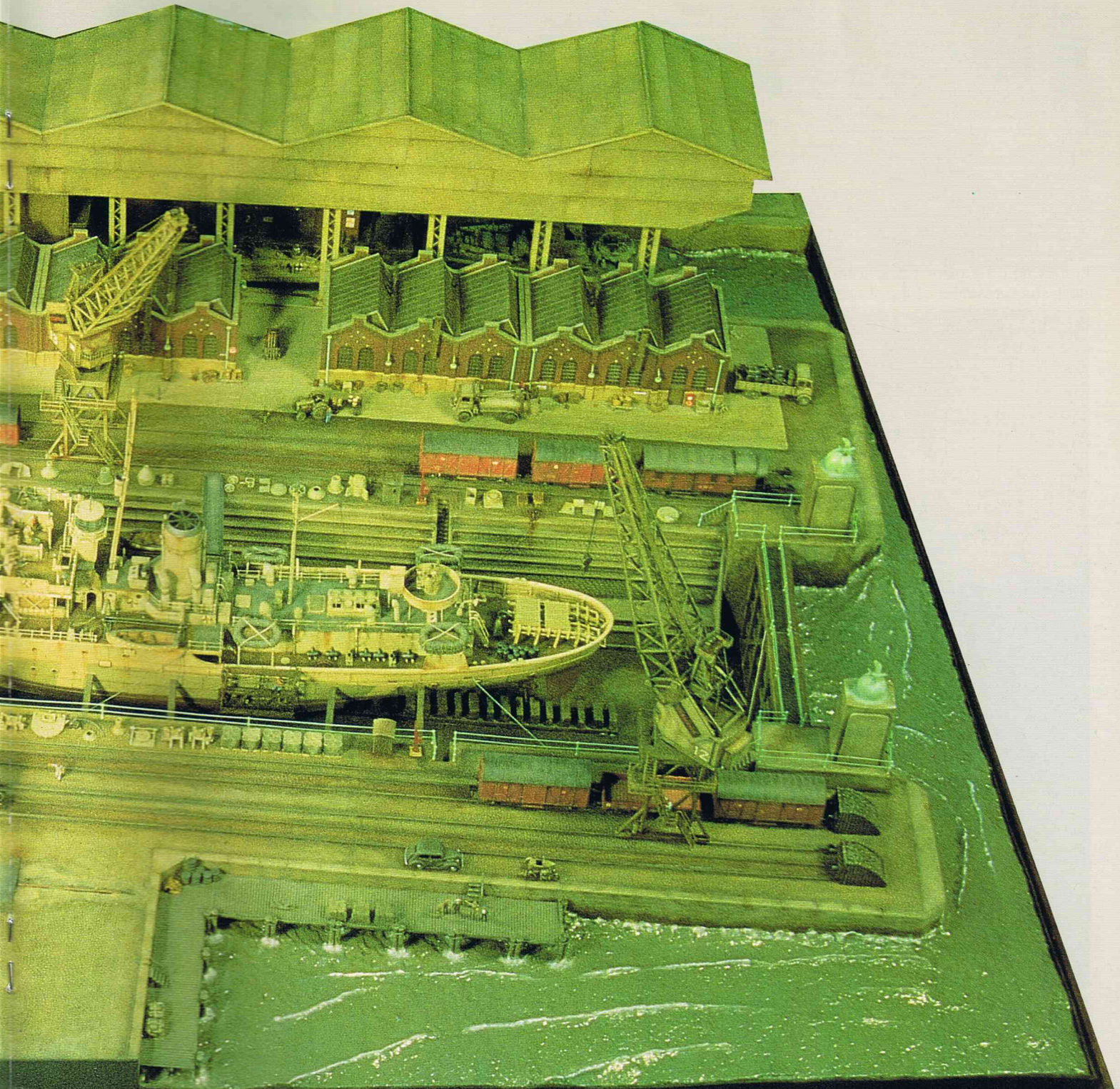
Fig. 6 Contents of paratroop haversack

Fig. 4 & 5 Equipment carried on the back are a rucksack, a spade annex pick, respirator, canteen and a toggle rope. Note the famous Fairbairn-Sykes dagger carried in a pouch on the right leg (partly obscured by the smock). The screwdriver bajonet can be seen in the bottom photo.





COCO



MOON

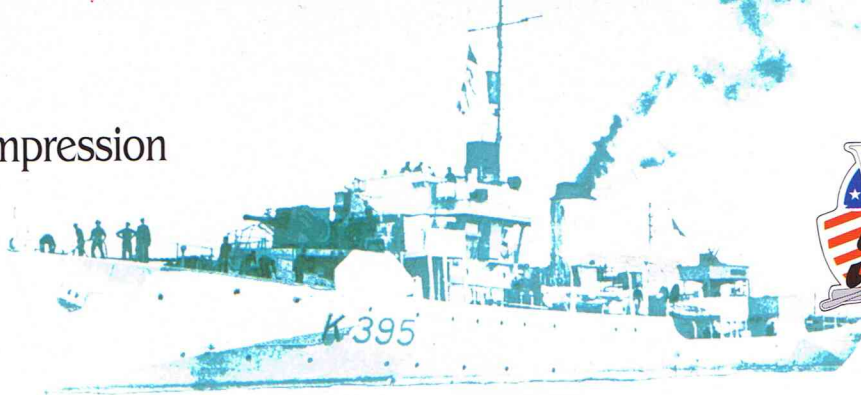
a 1:72 Diorama by Bob LETTERMAN  
January 1991





# Cocoon

## A Photographic Impression

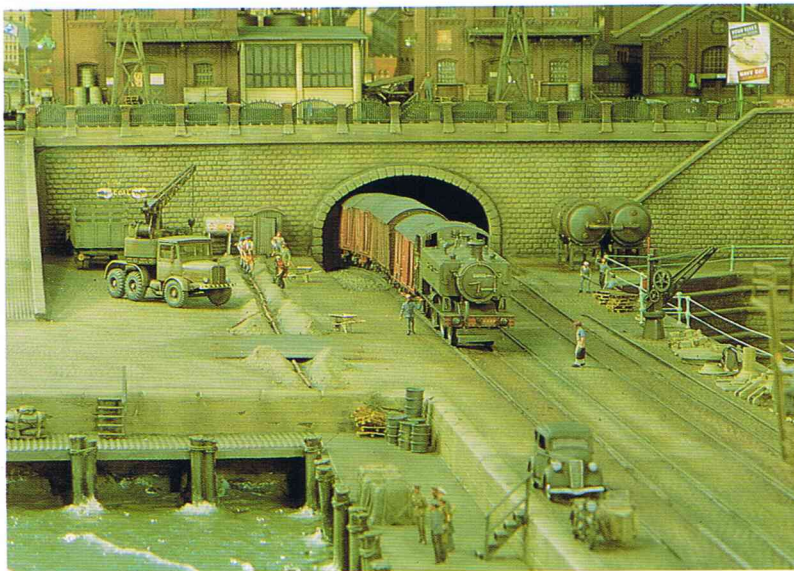


After converting a Matchbox Flower Class Corvette to a revised Flower, (43-44 program) which involved discarding most of the kit including the front half of the hull, I needed a diorama setting and decided on a dry dock. As the completed ship in 1/72 scale is nearly 3 feet long, the diorama measures 4 feet x 7 feet, (1200 mm x 2130 mm).

The base and the drydock, most of the ship, the covered docks, both walking cranes and the giant crane were scratch-built, the remainder of the structures were from Kibri.

The trains and vehicles were from model railroad products and the figures from Preiser.

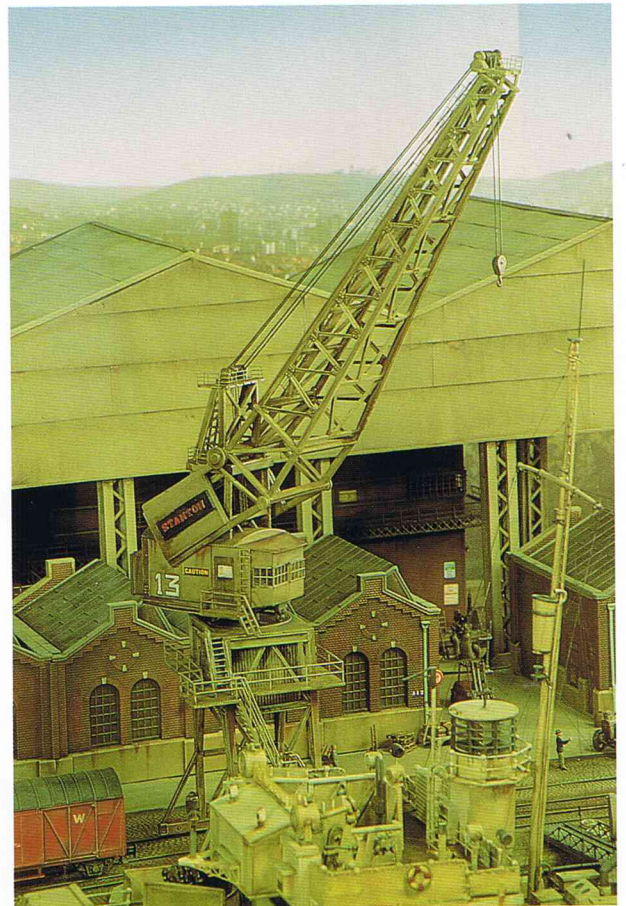
The scene is Smith Docks, on the river Tees, off the North Sea in 1944-45, and although the ship is fictitious, (K396 did not exist), it is typical of the last ships built; and particularly to Charlock K395 which also had a mainmast. Not shown are two small boats in the covered dock, an Airfix Torpedo boat and a Rescue launch.

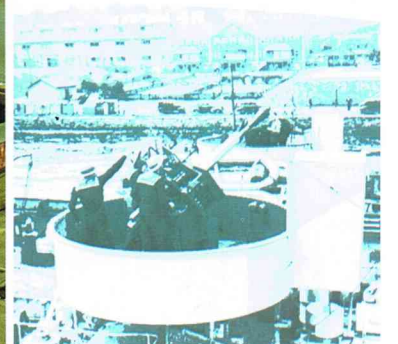
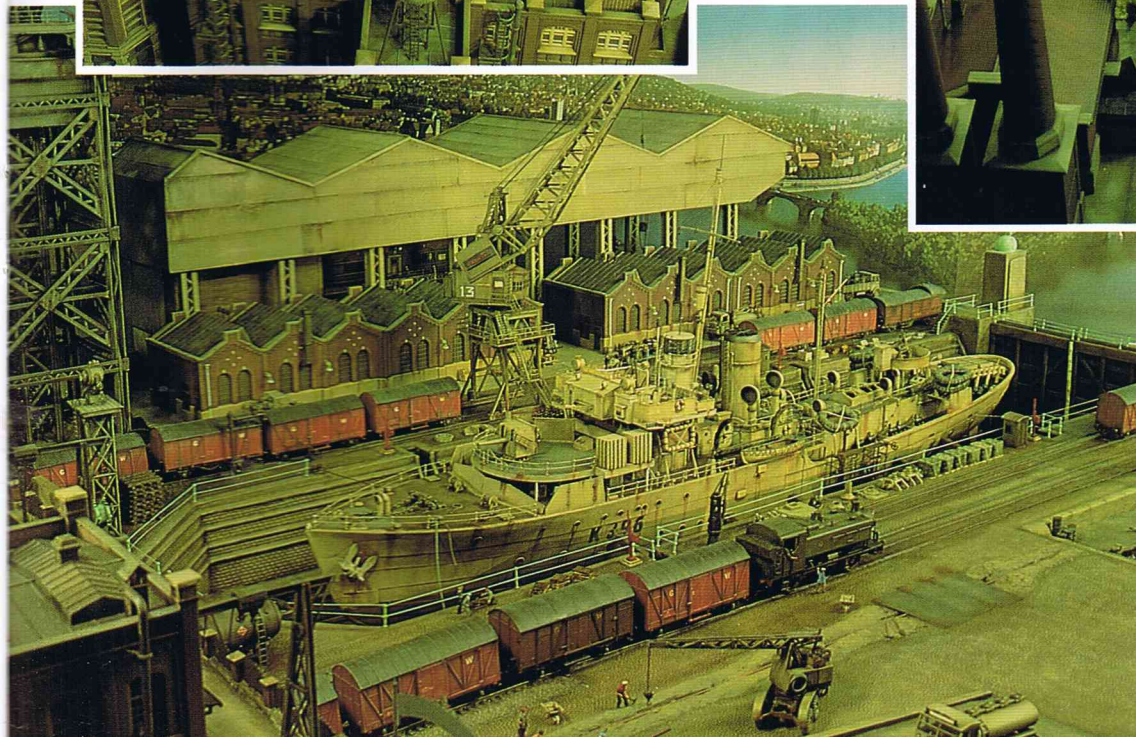
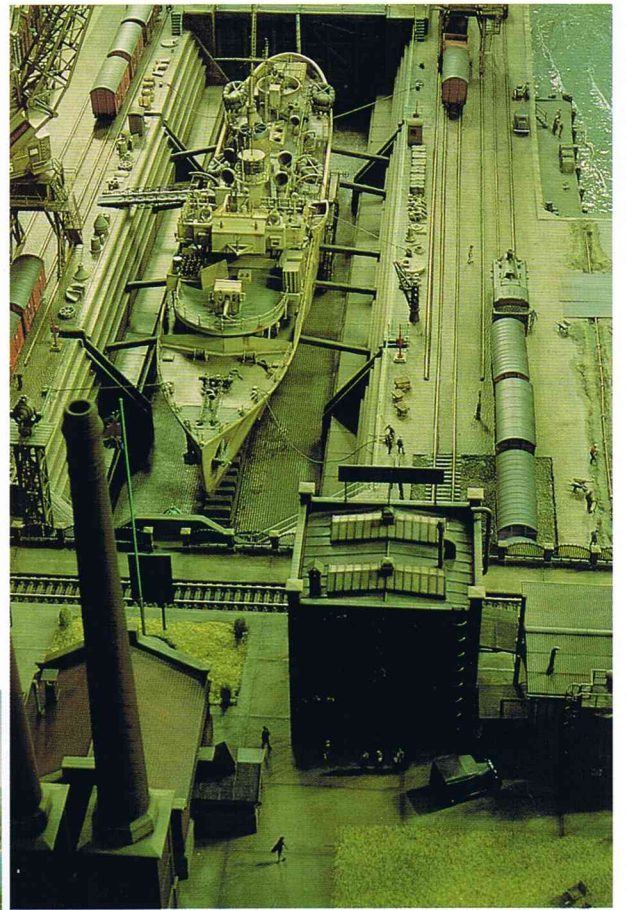
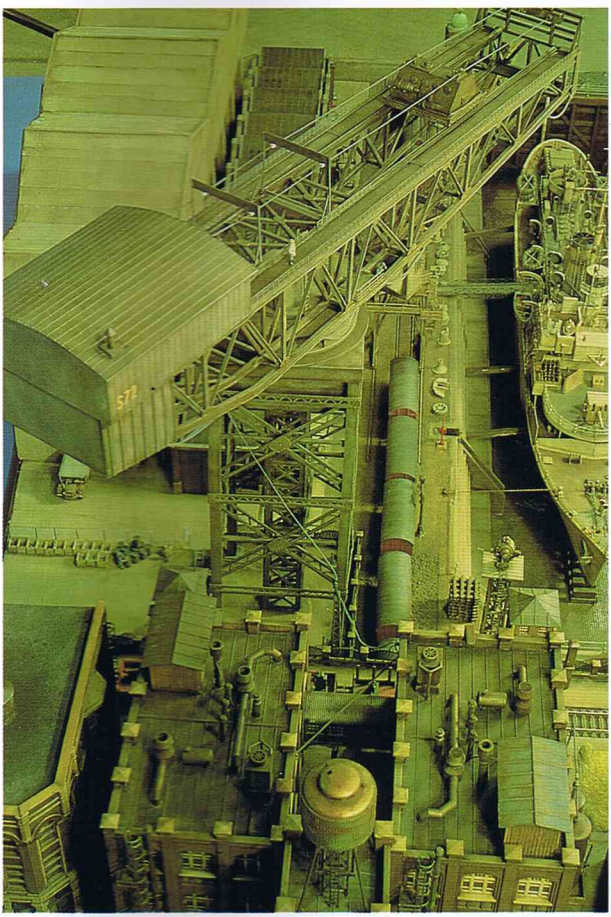
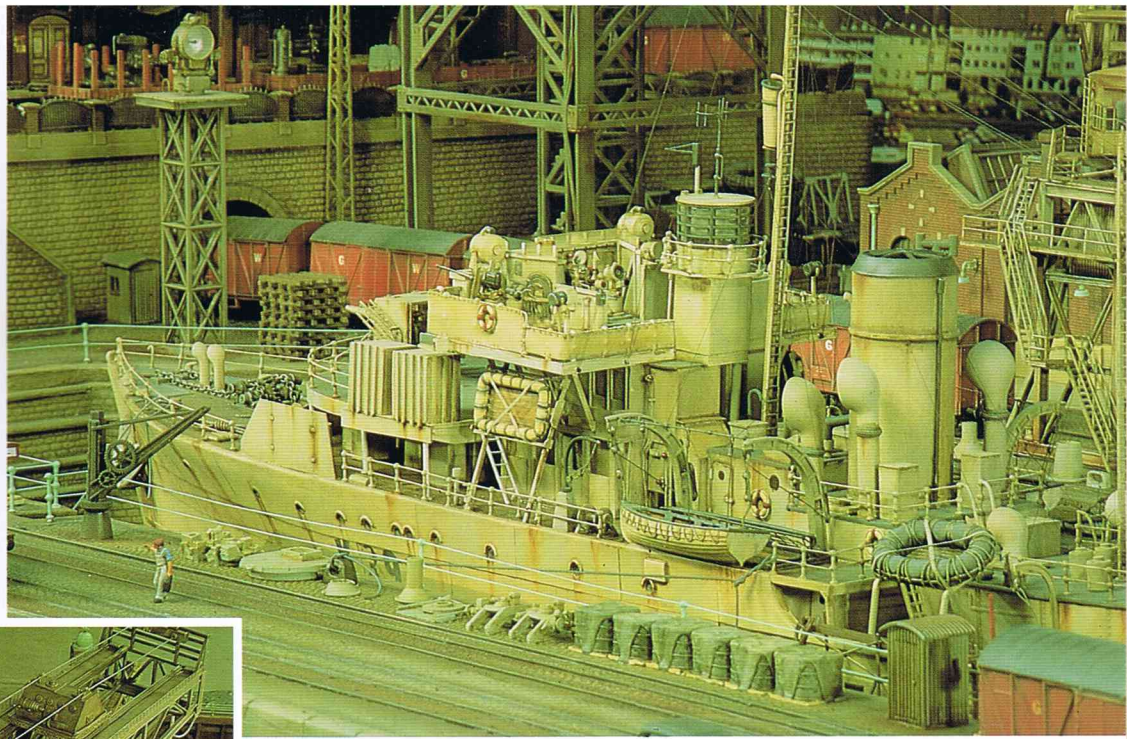
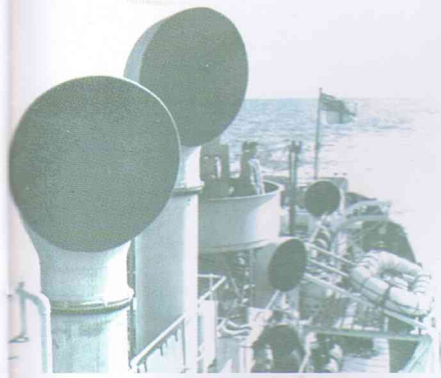


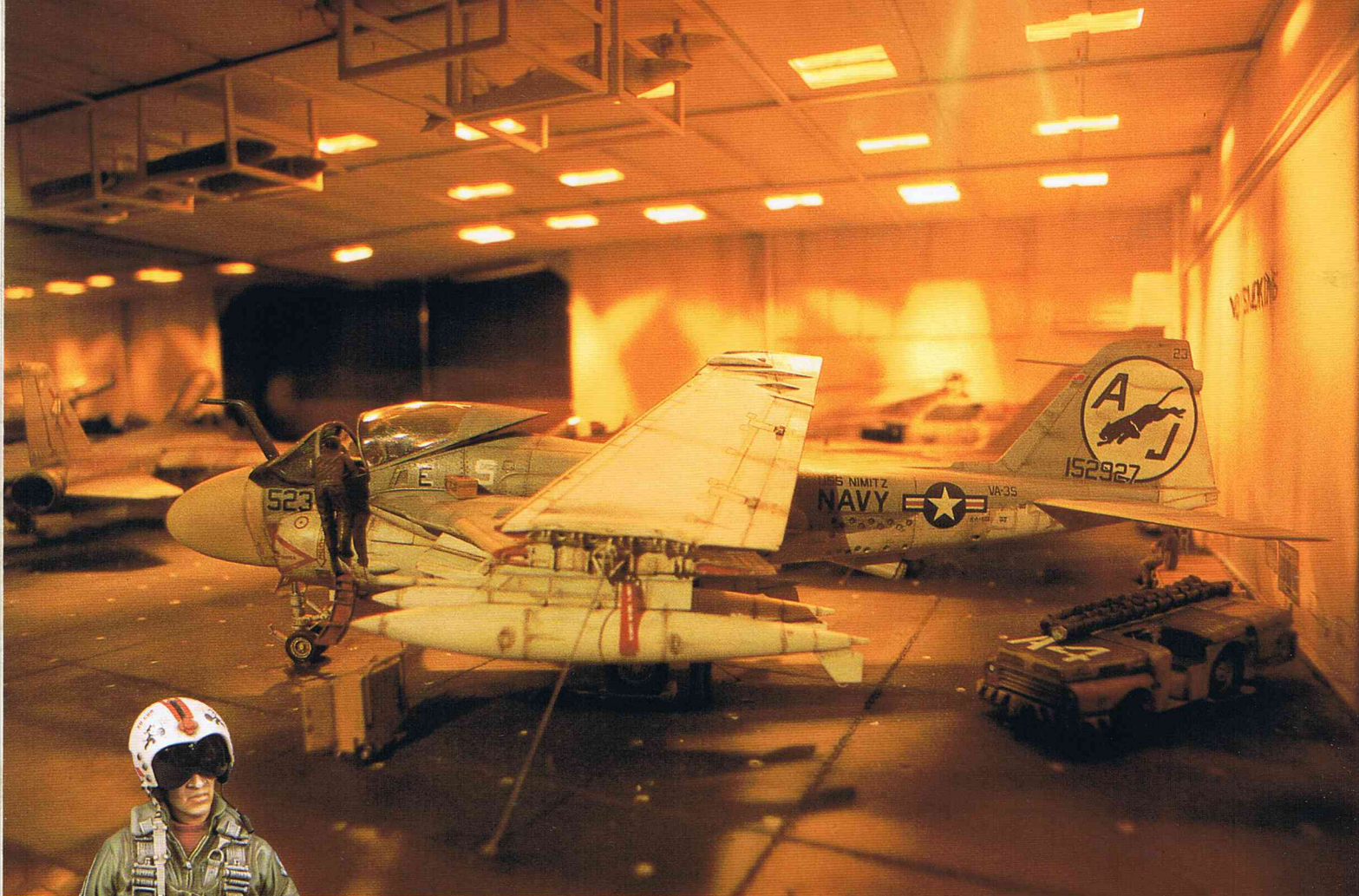
The diorama was started in 1987, and then work stopped after 6 months. Albeit a few brief restarts, a serious effort did not resume until summer of 1990, and it was finally completed in January 1991. So now, everybody with those partially completed projects, take heart! It can be finished!! It was my first attempt at model ship building and required a great deal of research. The principles of weathering were the same as with an armor diorama and it was a pleasant break from all those tracks and propellers.

Hope you enjoy the photos as much as I enjoyed building it.

Bob Letterman







by Ian RUSCOE

(Member of the Meir Youth and Community Centre Modelling Club at Stoke on Trent/ England)

#### THE STORY

On the 19th of August 1981, two U.S.Navy F-14A Tomcats of VF-41 "Black Aces", while flying a patrol mission from the U.S. carrier Nimitz, were fired upon by two Libyan Sukhoi Su-22 "Fitter-J's". During the following dogfight the two F-14's shot down both Libyan aircraft with no loss on their side.

The scene depicts the two aircraft involved, along with two other aircraft of the Nimitz's air wing.

## MAINTENANCE AT SEA

Part of the hangar deck of the U.S.S. NIMITZ CVN-68,  
late August 1981 / Eastern Mediterranean

One of the Tomcats, No 102, is undergoing an engine change and routine service inside the lower hangar deck of the carrier, while a KA-6D Intruder with wings folded and another F-14 Tomcat aircraft look on.

#### THE DIORAMA

The scene was set inside a shadowbox which was constructed of hardboard with the top hinged at the rear. A brass air vent was fitted to the top of the box for ventilation purposes. This was necessary





because two 60 watt miniature strip lights were secured to the underside of the cover. More ventilation holes were drilled in the rear panel as well as a hole for the electrical power lines. The complete exterior of the box was finally stained and polished.

#### THE BASE

The interior was constructed on and

around another piece of hardboard measuring 533mmx450mm. This was glued to the interior of the box.

The deck was made from plastic sheet glued to the base. After marking the position of the welding seams and the "tie-down" points a Pyrograph was used to form the floor welding seams and a drill was used for the tie-down holes. The base was then sprayed Humbrol "Black

Grey" and set aside to dry. It was later given a wash of Raw Umber oil paint and again left to dry. Then it was drybrushed, first with Humbrol silver and subsequently with Humbrol sand. To finish the weathering it was pastelled using brown, black and white chalks.

Only two side walls were built because the third (on the left of the base) is a simple mirror.

The rear panel depicts a part of the starboard (right) side of the hangar deck with the opening that leads directly to one of the four aircraft elevators. Both rear and side panel, as well as the hangar doors were made from various thicknesses of plastic sheet. Pipes and various smaller panels were fitted to both the side and rear wall which were then sprayed white.

This was then given a weak wash of Raw Umber artists oil and drybrushed in matt white. Some drytransfers and notice boards, produced by Verlinden, were applied. The panels were lightly pastelled with black chalk.

The right side panel represents the rear bulkhead of the hangar bay. A fire/access door located on this wall leads to a maintenance shop where the various engines for the air wing's aircraft are maintained and tested.





When painting was completed, both walls, mirror and clear glass (the viewing window for the front) were fitted to the base and a seascape photo was mounted behind the opening in the rear panel.

The roof panel was constructed in a similar way as the side walls. Square holes were left to simulate the rooflights. A few storage racks were constructed from plastic strip and attached to the ceiling. These racks hold some spare TARPS reconnaissance pods and various external fuel tanks.

#### THE AIRCRAFT

All aircraft in this diorama are from Fujimi. The F-14 Tomcat is an excellent kit, both in exterior and cockpit detail and fit of parts. The markings in the kit allowed me to make either "Fitter Killer" which saved me the hassle of having to buy separate decal sheets.

One of the Tomcats was made straight from the box while the one having an engine change needed additional work, mainly to its rear underside and around its left engine nacelle. The engine panels were carefully cut out, cleaned up and super-detailed together with the interior of the empty engine bays. Fortunately, two TF-30 engines and support trolleys are sold with the Fujimi kit which I both needed for my diorama.

The engines needed some extra detailing, mainly the addition of fuel hoses and hydraulic feed lines.

Once construction was completed the Tomcats were sprayed Humbrol Light Gray and given a light overall wash. This was then drybrushed with the base color and additionally some Matt White.

After the decals had been added, I outlined the panel lines using a further wash of Raw Umber. Slight drybrushing with Light Gray and Matt White preceded the final finish with pastels.

The KA-6D Tanker was constructed per kit instructions, except for the wings which were to be depicted in the "folded" position. This was accomplished by first carefully cutting along the wing fold joint using a fine toothed hand saw. The two ends were then blocked off with plastic sheet and the hinging mechanism was scratchbuilt from plastic sheet, strip and copper wire.

Painting and weathering of the model was done similar to that described earlier.

The SH-3H Sea King model was again constructed following the kit instructions with the exception of the rear cargo compartment and the main and tail rotor sections.

The interior was superdetailed by adding the sidewall ribs from plastic strip and by adding fittings to the cabin floor and side walls. Of course, this was all painted before the two fuselage halves were cemented together.

The tail rotor section was cut from the

rest of the airframe and received a similar detailing treatment as the KA-6D on its wings.

Several good detail photos can be found in the Osprey books on carrier aircraft.

After painting and weathering was completed (see Tomcat kit) the tail rotor section was attached to the airframe in the folded position as well as the main rotor blades.

#### FIGURES & EQUIPMENT

The figures used are a mixture of Hasegawa, Verlinden and Fujimi figurines which were mainly used straight from the box, although a few are conversions of various limbs, heads, etc.

Deck equipment was mainly from VP with a few taken from Fujimi such as the engine trolleys.

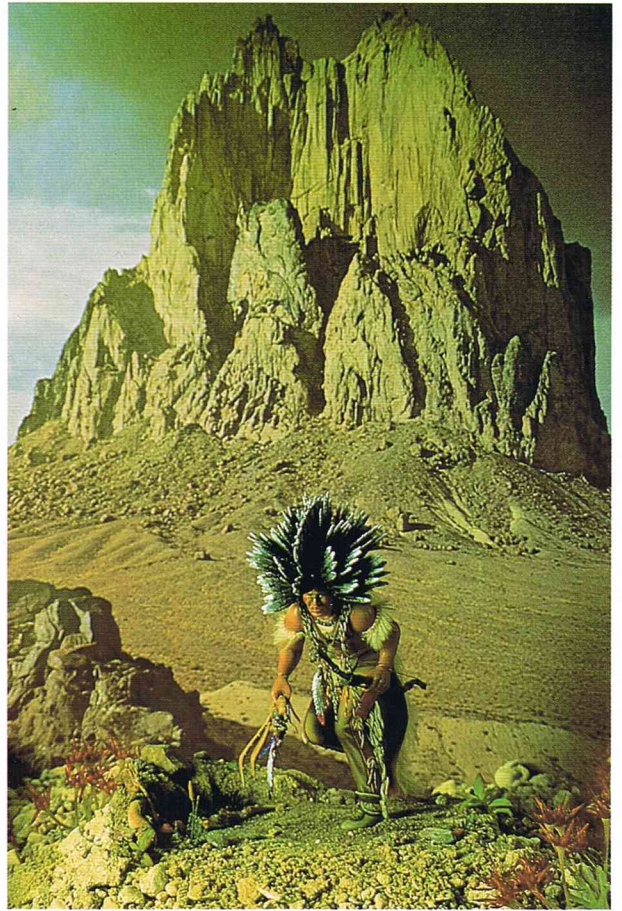
Although not apparent at first, a lot of "Tubes and Hoses", "Flexible Tubing", "Remove Before Flight Flags", "US Navy Tow Bars & Wheel Chocks", etc. were used to decorate the aircraft, all from VP.

All in all, a fairly expensive diorama with four aircraft kits, over five tractors and lots of figures and equipment, but considering it took me some time to construct it cost me no more than what the average modeler spends on his kits.

I enjoyed building it and I hope you enjoy the story and the pictures with this article.

Ian Ruscoe  
(MYCCMC)

Our readers have responded very well to our request to show their efforts to the rest of the modeling world. Because of an overwhelming offer of good quality slides and photographs, we decided to have three pages devoted to your work in this issue. Keep sending those photos, we will try to publish them in one of the next issues.



From Nafier, New Zealand we received two slides from Alan Rough who explains: "The Almond Dog Dancer won first price at a recent National IPMS convention. Real fur, leather and peacock feathers were used to superdetail the figure which was entirely painted with oils. The jungle scene was inspired by a Verlinden scene in a recent publication. The temple in the background was scratchbuilt and the VP figures were again painted with oils".



Roger Hurkmans of Moergestel, Holland responded by sending us photos of two of his earlier dioramas. The first diorama depicts a completely scratchbuilt British LTV 3 BUFFALO crossing the flooded "Walcheren" canal during the German occupation of his native country.

Great painting job ! Like many modelers before him, Roger could not resist building a Sherman (Tamiya, 1/35) using VP's 105mm conversion set. It perfectly fitted this scene, set somewhere in Normandy.

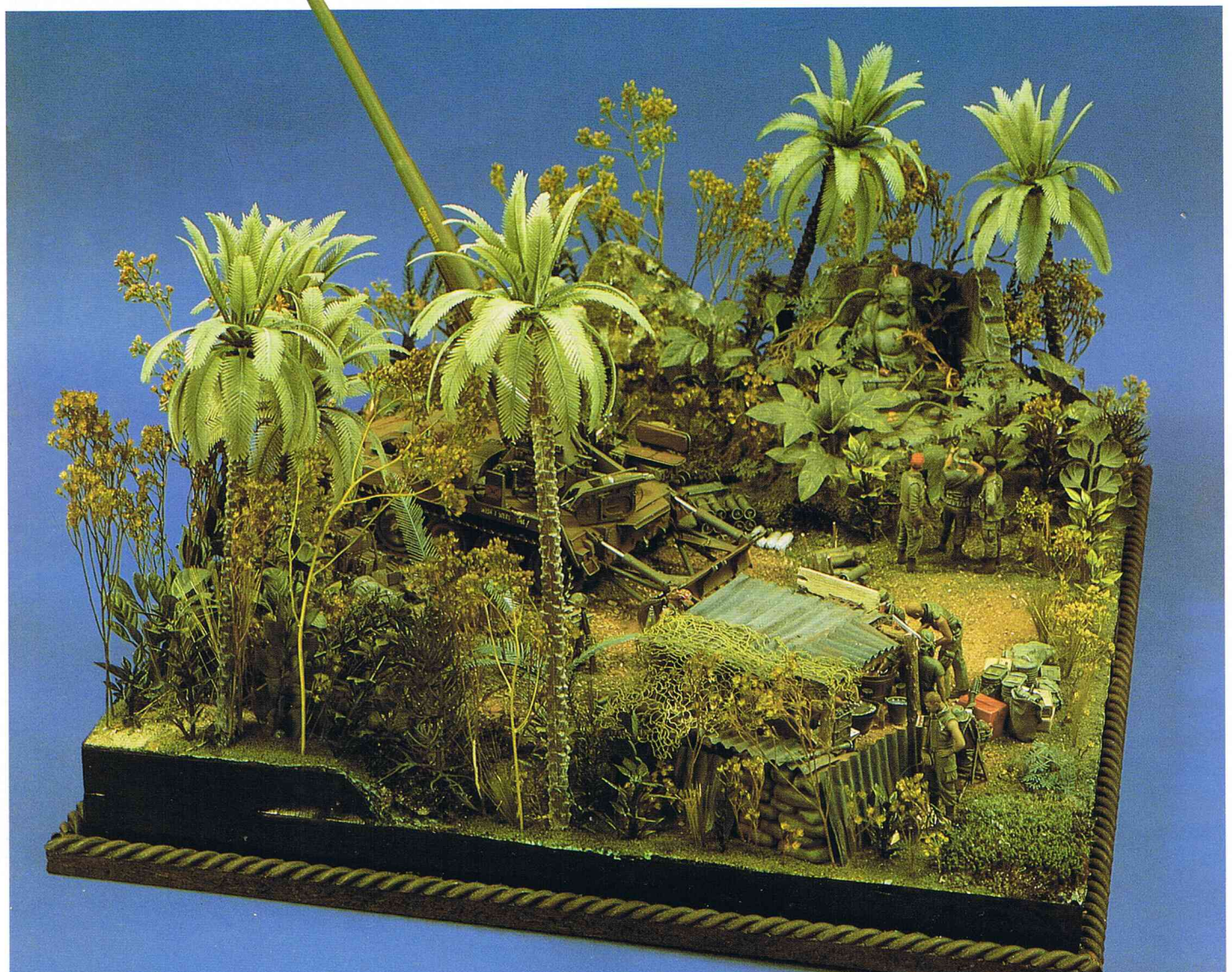


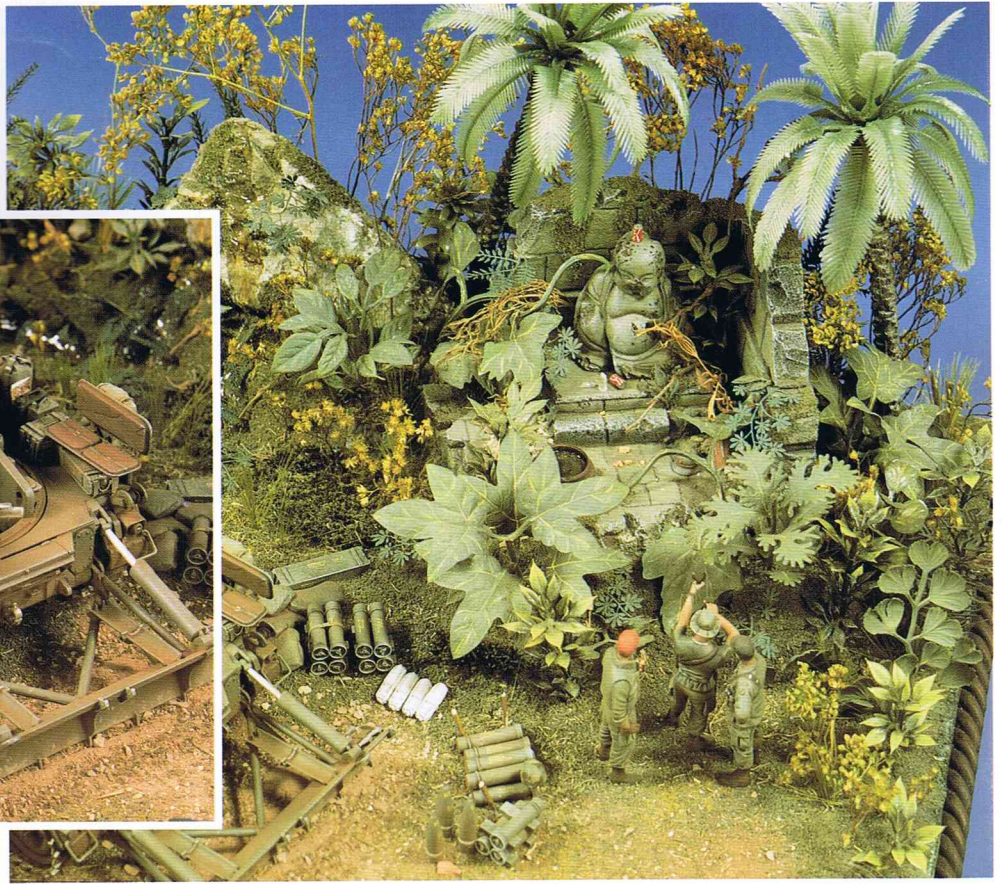
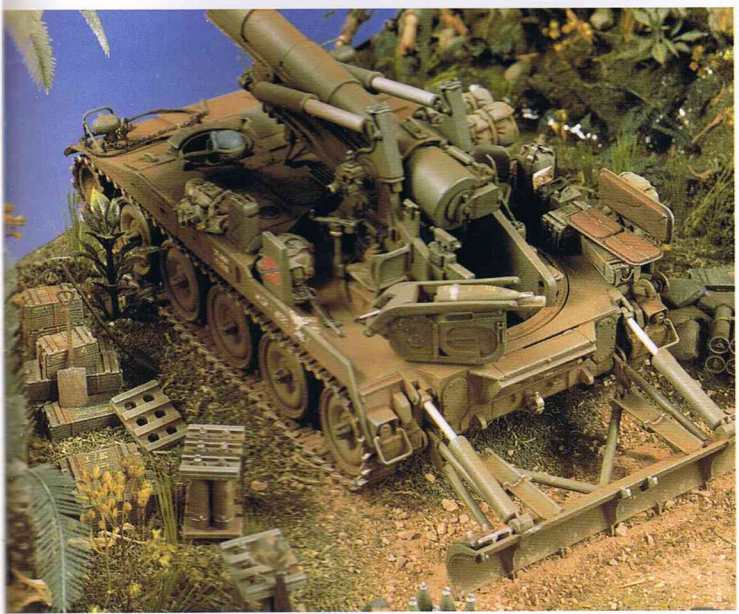
**special**  
3 pages of  
modelers in focus



French reader Patrick Auquinet of Vouaille-Maupertuis combined Revell's 1/32nd Huey and some VP 54mm figures for this realistic Vietnam diorama. Although it can barely be seen, Patrick extensively modified the interior.

Regular contenders to European modeling contests and the men to beat at the Euro Militaire modeling contest at Folkestone, England, Martin Schuh and his friend Dieter Metzdorf of Germany know how to create an atmosphere. This diorama, which deservedly won the Verlinden Award in the 1989 Euro Militaire contest took nearly a year to build. They go lengths to get every detail right and it shows. We will be showing more of their handiwork in future issues.









# More British Paratroopers WWII

## A 120mm impersonation

### A short historical preview

It was not until June 1940 that the present Prime Minister Winston Churchill ordered a special corps of paratroopers to be formed to carry out commando raids. Initially opposed by the Royal Air Force (who feared a reduction in available transport aircraft), a joint Army/RAF parachute training center was set up where some 5,000 troops were to be formed. In November 1940, only a few months after training started, the first commando's of #11 SAS Battalion were ready for their first operational assignment.

The combat-readiness of the new para's was tested by sending them to occupied Europe to take the Tragino Aquaduct in Italy. Although the raid was successful, all 29 participants were caught by the Italians and taken to POW camps. Most of them managed to escape and rejoined their unit in England.



A combination of two recent VP 120mm releases was used for this "little" vignette. The British Para Sniper (N°537) and the Vignette Base (N°557) go together well. Two options are presented in the figure box as shown on the photo at right, a helmet covered head or one wearing the maroon beret. After cleaning, body parts were glued with superglue and flesh parts

painted with artist oils. Colors used for the camouflaged smock are Humbrol H14 Sand (with a drop of Khaki Drill), Red Brown and French Artillery Green. Trousers were painted Matt29 (Dark Earth), washed and highlighted. Boots were Matt Black and detail accentuated with a Khaki Drill/Black mixture. The webbing and backpacks were done in

Matt 72 Khaki Drill and subsequently washed and drybrushed. The wooden parts of the rifle were also painted with various colors of artist oils as was the butt end of the abandoned German MP-43 machinegun (VP N°545). Metal parts of the weapons are painted gunmetal, and highlighted with the remainder of silver paste (or similar material) on a cloth.



As far as painting is concerned, there is not much difference with this diorama featuring N°519 "A Bridge Too Far" (2 figures) and N°485 "British Paratrooper/ Arnhem WWII". They are set amid parts of set N°558 "Assorted Ruins & Debris". Again, the German weapons were taken from the two available sets in the 120mm range and the German radio set is part of an upcoming set of 120mm German accessories. The barbed wire and the direction signs are familiar to the 1/35 scale modeler.

Another way of showing the paratrooper with the wounded fellow warrior. The wooden base can vary in shape and size, or identical bases can be used for the complete collection.





# American Graffiti

*Covering The American Modeling Scene*



## Crystal Ball

The new releases for 1991 include the **MONOGRAM** Nr. 2939 1/24 Pennzoil Pontiac Stock Car (May), Nr. 2940 1/24 Snickers Stock Car (May), Nr. 2941 1/24 Purolator Lumina Stock Car (May), Nr. 2942 1/24 Maxwell House Thunderbird Stock Car (May), Nr. 2949 1/24 Western Auto Lumina Stock Car (May), Nr. 2933 1/24 STP Firebird Pro-Stock August), Nr. 2934 1/24 Pennzoil Firebird Pro-Stock (August), Nr. 2948 1/24 Ford F-350 Dual-wheel Pickup (August), Nr. 5834 1/48 F-117A Stealth (August) and Nr. 5507 1/48 B-25J Bomber (August)... 1991 brings new WWII Luftwaffe aircraft from **DRAGON (DML)**, Nr. 5002 1/72 Mistel V (He 162A-2) on Ar E377A (Me 262) (March-April) and a 1/72 Ar 234C-3 & He 219 for later in 1991... **HASEGAWA** has announced a Nr. J10 1/48 Messerschmitt Bf 109F-2 (April)... Coming later this year from **OSPREY** books in the Men-At-Arms Series is Nr. 235 Army of Gustavus Adolphus (1) Infantry; Nr. 236 Frederick The Great's Army (1) Cavalry; Nr. 237 French Armies of the Franco-Prussian War (2) Republican and Nr. 238 Foreign Volunteers with the Allied Forces 1939-45 (August). Then for December release... Nr. 239 Ancient Mexican Armies: Aztecs, Mixtecs & Zapotecs; Nr. 240 Frederick The Great's Army (2) Infantry; Nr. 241 Russian Army of the Crimean War 1854-56 and Nr. 242 Modern African Wars (3) SW Africa. In the highly acclaimed Elite Series, Nr. 2034 Deutsche Afrika Korps and Nr. 2035 Ancient Samurai 400-1500 (June releases). Then coming in October, Nr. 2036 The Texas Rangers and Nr. 2037 Panama 1989-90. The new Campaign Series has 4 releases for 1991. They are Nr. 3009 Agincourt 1415 and Nr. 3010 First Bull Run 1861 (June releases). Coming in October are Nr. 3011 Kaiserschlacht 1918 and Nr. 3012 Culloden...finally **VERLINDEN PRODUCTIONS** announced the following new releases for February 1991; in the 120mm range N°548 Desert Shield soldier in CBR Dress, N°549 Assorted Hands; on 1/35 N°546 Egyptian/Israeli AMX 75mm Turret for the Sherman, N°547 M981 "FIST" (M113 conversion), N°550 Israeli M113 Command/Communications vehicle, N°551 Military Supplies, N°552 Desert Shield Troops including 3 figures; for the aircraft modeler on 1/72 N° 553 F-4 Phantom Superdetail set (to update either one of 6 different Hasegawa kits); two more books will be released as well, **LOCK ON** N°554 on British Phantoms (3types) and the long awaited **WARMACHINES** N°555 Israeli Shermans and Derivatives. March 1991 will see the following items, 120mm N°556 German Heads, N°557 Vignette Base, N°558 Assorted Ruins and Debris, N°562 an ancient Wiking Warrior with treasure box and N°563 German Assault Gun Officer WWII; on 1/35 can be expected N°559 Desert Shield Signs & Markings, N°560 Israeli M51 Sherman Turret...More news from **TROPHY** with some interesting releases due in March 1991, a 1/1 scale F-16 Control Stick (20026), Red and Gray Bricks (20027 & 20028) for diorama construction, a Ruined Country House (20029), Small Factory Ruin (20030) and finally a new Church Ruin (20031)...

## MONOGRAM

### SU-25 Frogfoot 1/48

This is the latest offering from MONOGRAM in 1/48th and is one of the best ever from them. The first thing that caught our eye was the small slip of paper inside a sprue bag printed "Molded in Korea". Wherever it was molded, this is a beauty. We have always talked of the raised panel lines on a MONOGRAM kit, but not here: beautifully scribed panel lines or else delicate raised detail that is crisp and sharp. We were really pleased with the appearance of this kit.

We had some warp in the fuselage in our kit but a check of a few other boxes showed this to be a problem in our kit only. Otherwise the kit went together very easily, with only a little extra effort required in the main landing gear wells. And that may have been due to the warping in the fuselage. Also watch the front wheel forks, due to the delicate molding it can be fragile. We set ours down a little hard before we had installed the front wheel and broke the forks. So you can learn from our error. Another suggestion is to test fit the canopy over the cockpit. We had to bend the sides of the pilot's overhead armor inwards to let the canopy sit on the edges of the cockpit. One other item we were impressed with is the thin, clear molding of the canopy parts.

The kit supplies a full set of underwing stores: 2 wing tanks, 4 missiles and 4 rocket pods. This matches pretty well the stores carried in various photos we have seen of Soviet and Czech Su-25's.

The aircraft number and markings on the decal sheet appear to be for the Su-25 shown at the Paris Air Show; so we matched the paint scheme to the color photos of 301 at Paris. One item we noticed is that the color of the pilot's ladder and compartment in the fuselage is called out as white on the instructions. But photos from Paris show these and the step under the cockpit painted a pale green, so we went with the photos for this bird. We used the MONOGRAM decals and these went on and settled with no problems.

When the last coat of dullcoat was sprayed a good looking model was the result. We were very pleased with the final product and we think you will be. Even with the warped fuselage the kit went together well. For the price and the quality this is a highly recommended kit.

## New kits Reviewed



### VERLINDEN PRODUCTIONS

#### WWII COSSACK 120mm

This new release from Verlinden Productions is of a cossack standing with his hand on his sabre, with a pistol holster and cossack dagger hanging from his belt.

We felt the face is one of the best parts of the figure. A very Russian looking face with flowing mustaches, lined with age and experience.

The figure went together well like all the 120mm series we have assembled. The only fit problem encountered were slight gaps at the shoulder-arm joint and superglue filled those. We found two places that took some care in assembly: aligning the two parts of the sabre and glueing the legs (actually, just boots)

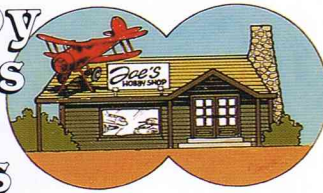
in place. The latter was merely a problem of getting the legs positioned so the stance and body alignment looked right. We suggest not using a lot of superglue at first. We might also recommend that a figure like this be given some locating notches or pins to make positioning the legs relative to the body a little easier.

The figure can be painted as any WWII cossack from a Don Cossack to a Kuban Cossack; but we think this figure will also lend itself to converting to cossacks of different eras. The cossack costume hadn't changed drastically for 200 years when the Second World War broke out. The main difference will be in the headgear, boots and what weaponry is carried.

**HASEGAWA**

Watanabe Dunlop Reynard 89D F3000 1/24  
 We decided this would be a nice change of pace to build from the military hardware we usually do. Just as a test of HASEGAWA's pictorial instructions we tried putting the model together without looking at the part sprue numbers. No problems at all, the directions are clear enough to even tell whether it was a left-handed or right-handed part we were looking for. The only error was the Step 3 diagram did not show that the pins on part B1 go into holes in parts C15/C16. Even so, when the parts are assembled this becomes self-evident, so it isn't even that much of an error. It does go to show that HASEGAWA spent the time to work out their instruction sheets. This kit is nicely detailed yet very well designed; and we had no problems with assembly as the parts fit together easily. The two-tone green, yellow and white color scheme is bright and attractive, and the decals went on with no trouble. We elected to discard the body color decals and paint the overall scheme and just apply the lettering decals. We thought this was a good move by HASEGAWA, making it easier to match the decal colors for details and touch-up without buying GUNZE paints for one kit. The only difficulty we ran into here was with the reverse transfers for the "DUNLOP FORMULA" names on the tires. We found that these were hard to position on the tire. In other words, when they stuck they stuck. We found that getting these positioned correctly on the tire, then wetting the transfer and soaking the backing off in position was the way to go. When all was said and done, this kit was fun and easy to assemble and the completed model looks good. We can easily recommend this kit for the novice or the expert.

**Hobby Shops in focus**



North Side Hobbies  
 2750 Aurora Rd.  
 Melbourne FL 32935  
 (407) 255-1659  
 CONTACT: Paul

Ken's Hobby  
 325 J.E. Merritt Island C. Way  
 Merritt Island FL 32952  
 (407) 454-9357  
 CONTACT: Ken Rawley

Big Boys' R/C Hobbies  
 325 J.E. Merritt Island C. Way  
 Merritt Island FL 32953  
 (407) 454-4214  
 CONTACT: Terry & D.L. Barber

Orange Blossom Hobbies  
 1975 North West 36th  
 Miami FL 33142  
 (305) 633-2521  
 CONTACT: Pat Parntner

Engineers Of So. Fla. Inc.  
 14835 N.E. 20th. Ave.  
 North Miami FL 33181  
 (305) 949-5263  
 CONTACT: Frank Davidson

The Model Factory Inc.  
 2011 SW 70th Ave, SUITE A22  
 Davie FL 33317  
 (305) 475-1905  
 CONTACT: Ed Witten

Warrick Custom Hobbies Inc  
 Davie Shopping Center  
 4693 S. University Drive  
 Davie FL 33328  
 (305) 434-9777

Military Miniatures & Dioramas  
 15031 Windbluff St.  
 Davie FL 33331  
 (305) 434-9474  
 CONTACT: Carlos L. Quintana

The Craft House Hobby Shop  
 1079 N. Military Trail  
 West Palm Beach FL 33409  
 (407) 683-0764  
 CONTACT: Don Alken

Han's Hobby Shop  
 1202 W. Waters Ave.  
 Tampa FL 33604  
 (813) 935-7782  
 CONTACT: Jeff Perry

Lake Side Hobby Shop  
 13737 N Dale Marby Hwy  
 Tampa FL 33618  
 (813) 961-9432  
 CONTACT: Evette Martin

Hobby House  
 6393-9th St. N. Unit 105  
 St. Petersburg FL 33702  
 (813) 521-4148  
 CONTACT: Colin Nibbs

Marchets Toys & Hobbies  
 2615 South Florida Ave.  
 Lakeland FL 33803  
 (813) 682-4312  
 CONTACT: Red Walling

Solomons Hobbies  
 397 Cypress Gardens Blvd.  
 Winter Haven FL 33880  
 (813) 293-3434  
 CONTACT: Doug Bartley

A & J Models  
 873 Lafayette Street  
 Cape Coral FL 33904  
 (813) 542-3363  
 CONTACT: John F. Haufe

Tommy's Hobby  
 145 Pasco Plaza  
 Land O Lakes FL 34639  
 (813) 949-8393  
 CONTACT: Donald Thompson

The Depot Hobby Shop  
 603 Ridge Rd. Lantana Shp Ctr  
 Lantana FL 33462  
 (305) 585-1982  
 CONTACT: James Tillman;  
 Georgina. Green

**This issue: South Florida**

Dear Mr. Haggerty,

First, I completely understand your point of view, however, please realize that because of the number of releases in this line, it is not possible for one sculptor to keep up. It takes 3-4 weeks full time on an average to sculpt a figure. We use several sculptors and, just as people have different shapes, so do sculptors have different styles. Remember that sculptors are artists and you could not get them to work like a machine and duplicate a style dictated to them by someone else.

If you buy from different manufacturers you will notice that they all have different styles one from the other. The only way to assure uniformity for us would be to drop our rate of releases from 30 or 35 a year to 10 or 12. Would you want us to do that? On the other hand, it is our opinion that no two people look alike except for identical twins. I would suggest to go on the street and observe people and visualize them as figures. I think you will be amazed at the variety of shapes, sizes and proportions. If we produced figures of Arnold Schwarzenegger and Pee-wee Herman, both in 120mm, you would not believe they were the same scale and they would definitely be considered uniform.  
 F.V.

Dear Mr. Verlinden,

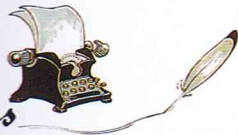
I have been using your products for five years and I appreciate all you have done for the hobby. I have some suggestions as I have noticed a trend in the last two years. You continue to release a disproportionate number of WW II German products and figures. I would like to see more WW II

Americans. I am sure they would be welcomed by everyone as there is not that much available. I would also like to see Japanese WW II, this is an area overlooked by almost every manufacturer.  
 Milton Munson  
 Los Angeles, CA.

Dear Mr. Munson,

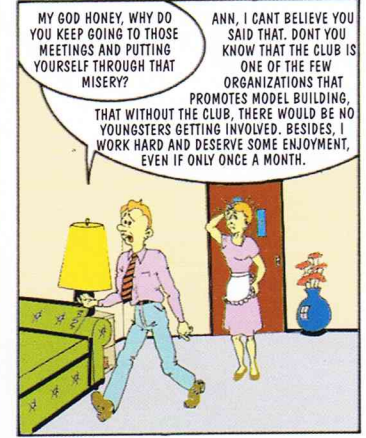
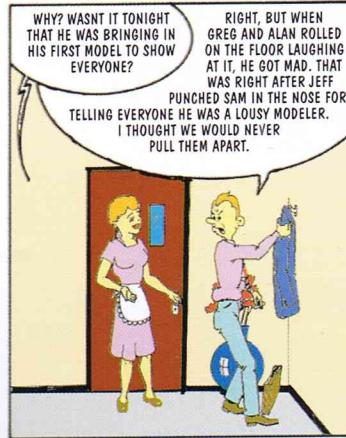
As a lifelong modeler, I appreciate your position. My position is and must be 49% modeler and 51% businessman. Sometimes this creates a conflict within myself, but in the end, the businessman must always win. If not, there would be no Verlinden Productions. We have to check our sales figures to determine the direction of our product development and believe me, WW II German is so far ahead of the second place that there is no comparison. Of course, we will always produce other items, but as long as the current trend continues, we must supply what the majority of consumers are demanding as dictated by the sales figures.  
 F.V.

*We get letters*



Dear Mr. Verlinden,

I have collected your 120mm figures since you first released them and I think they are the best on the market. I do have to comment that some of the figures within the range are such a completely different style than the others and I was wondering if you couldn't make them more uniform in the future. I display them in a glass case and viewed together when completed and it is quite obvious they are different styles.  
 J.L.Haggerty  
 Montgomery, AL



Any similarity with existing persons, living or dead, or organizations with similar activities is purely coincidental.

# WINTER STARS



**K40 Sukhoi Su 27 Flanker A**  
1/72 scale



The Su-27 is one of the most advanced fighters in the Soviet arsenal and Hasegawa has done a fantastic job of capturing this large fighter in 1/72 scale. In order to duplicate the complex form of the fuselage accurately, the upper fuselage and upper wing panels are molded in one piece, thus assuring proper alignment. Includes High Grade photo-etched and other metal parts.



**DML 3511 BTR-80 - 1/35 scale**

The Soviet BTR-80 is an 8x8 amphibious armored personnel carrier. This exciting new release from DML is an excellent addition to their growing line of outstanding 1/35 scale armor kits. Kit features include 8 opening hatches, rubber-like tires, and the front four wheels are steerable!



**G715 M60 A1 Blazer - 1/35 scale**

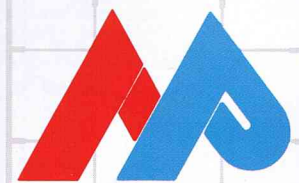


A vast array of white metal, photo-etched and plastic parts make up this new High-Tech model of the U.S. Marines M60-A1 with Blazer reactive armor from Gunze Sangyo.



**FUJIMI 27021 Mig21 bis - 1/72 scale**

This is the first new aircraft model from Fujimi in quite a while. The much anticipated Mig 21 family begins with the release of the Mig 21 bis, in "Black Lynx" Finnish markings. Beautifully subtle engraved panel lines, super detail and fidelity of scale typify the finest of Fujimi's efforts.

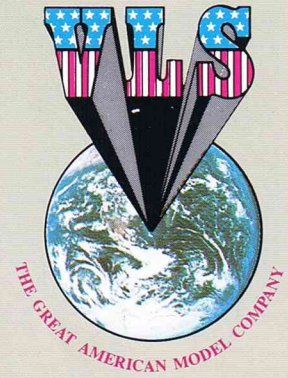
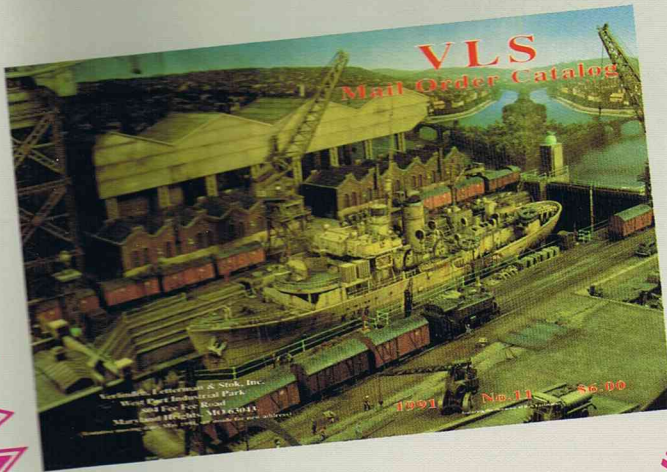


**MARCO POLO  
IMPORT**

532 S. Coralridge Place  
City of Industry, CA 91746

Tel: (818) 333-2328

Fax: (818) 333-7870



West Port Industrial Park  
804 Fee Fee Road  
Maryland Heights, MO 63043  
(314) 567-6266 FAX (314) 567-9211

ALL NEW VLS Catalog N° 11 \$ 6.00  
Include all VLS products

## MAIL ORDER

Verlinden and many  
other products

ALL THESE PRODUCT LINES DIRECT FROM ONE OF THE  
WORLD'S LARGEST HOBBY MAIL ORDER HOUSES

Aerofax Books  
Aero Series Books  
Airfix Kits  
Airmodel Kits  
Amati Figures  
Andrea Miniatures  
APC Decals  
Ares Figures  
Armor Research  
Bare-Metal Foil  
Barton Figures  
Belgo Figures  
Canucks Unlimited  
Cheshire Volunteer  
Cinema One Video  
Commander Series  
Concord Books  
Conrail Vac-forms  
Curbside Dioramics  
Depot G

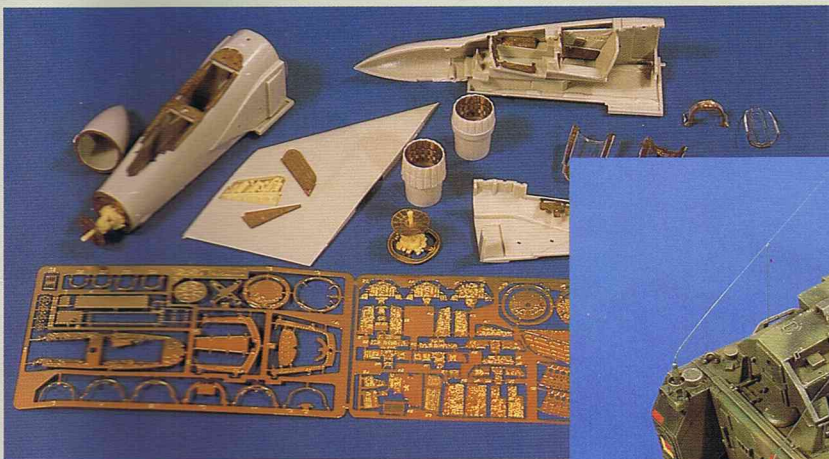
Detail Master  
Geneve Figures  
DML (Dragon) Kits  
Donegan Optical  
EXTL/AMT Kits  
EXTL/MPC Kits  
Expert's Choice Decals  
Falcon Vac-forms  
Form-A-Mountain  
Futura Kits  
Grand Line  
Greave Figures  
Gunze Sangyo Kits  
Hasegawa Kits  
Keller Kits  
Historax Figures  
Hobbycraft Kits  
Humbrol Paints  
Italeri Kits  
[NJ] Decals

Lazer Adhesives  
Lindberg Kits  
Mascot Models  
Mil Art Figures  
Milliput Putty  
Minicraft Kits  
Model Graphix Books  
Model Kasten  
Model Technologies  
Monogram Kits  
MP Models  
Nichimo Kits  
On The Mark Models  
Osprey Books  
Pactra paints  
Parts Depot  
Poste Militaire  
Rareplanes Vac-forms  
Repli Scale Decals  
Revell Kits

Sanford Books  
Schmidt Vac-forms  
Snl Products  
Sovereign Figures  
Squadron Products  
Starlight Miniatures  
Superscale Liquids  
Tamiya Kits  
Techstar Products  
Testors Kit  
Testors Paints  
Trimaster Kits/Tools  
Trophy Models  
Verlinden Brushes  
Verlinden Productions  
VP Modeling Magazine  
Waldron Products



VP 6 548 CBR DRESS  
'DESERT SHIELD'  
\$34.95  
120mm



VP 4 5553 F-4 Phantom update set (6 types) 1/72 \$20.95



VP 4 546 Egyptian/Israeli AMX 75mm turret 1/35 \$20.95



VP 4 547 M981 "FIST" Conversion kit (for M113)

\$21.95

We gladly accept



Minimum order \$10.00

Continental U.S. No shipping charges  
Canada/Mexico 15% postage  
Foreign orders ...please add 20%

